



T-Xtreme Tunnel



OVERVIEW

Holophane's new T-XTREME luminaire is specially designed to adapt to all types of tunnels and absorb the vibrations of passing vehicles.

It can work at temperatures ranging between -40° and 50° depending on the power chosen and is specially designed to provide correct lighting throughout the life of the project.

It uses Zhaga components to minimize and facilitate maintenance tasks. The driver is accessible from the front and requires no tools.

features

- Robust projector to withstand decades of operation in tunnel environments.
- Modular design in 3 sizes with different fixing solutions.
- Easy maintenance: front tool-free access to drivers and quick connectors.
- TUNNEL-FIX system: for easy installation and alignment of the luminaire in the mounting bracket.
- Different mounting systems (from top, side, separated box, attached box, etc.)
- High lighting performance with reduced consumption.
- Separate compartment for LED and gear.
- Latest generation LEDs with high brightness, efficiency and reliability
- Possible inclines (alignment every 5° with swivel joint)
- Ready for connection: Zhaga base, Nema, Dali or dedicated cable entry and communication nodes (ZD4i).
- Energy Efficient: up to 165 lm/W.
- Sturdiness: IP66 + IP69K + IK10.
- L90B10 useful life: 100,000h (Ta) 25°C.
- Smart Ready: Designed to house both indoor and outdoor communications nodes.
- **TXR S:** c.4,000lm - 23,000lm
TXR M: c.25,000lm - c.38,000lm
TXR L: c.40,000lm - c.75,000lm

standards / certificates

- | | |
|--------------------------|--------------------------|
| • UKCA | • UNE-EN 55015:2013 |
| • RoHS | • UNE-EN 61547:2009 |
| • UNE-EN 60598-1:2009 | • UNE-EN 62031:2009 |
| • UNE-EN 60598-2-5:2003 | • UNE-EN 61347-2-13:2009 |
| • UNE-EN 62471:2009 | • UNE-EN 62384:2007 |
| • UNE-EN 61000-3-2:2006 | • UNE-EN 13032-4 |
| • UNE-EN 61000-3-3 :2013 | • UNE EN ISO 9227 |



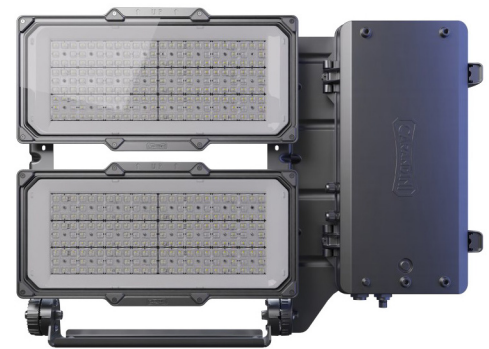
3000K
CRI>70

4000K
CRI>70

T-XTREME S



T-XTREME M

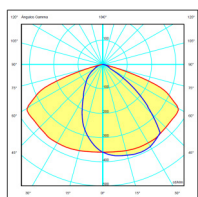


T-XTREME L

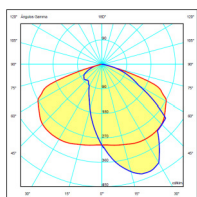
T-XTREME

photometric distributions

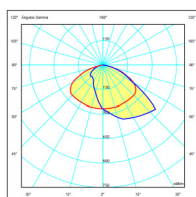
12 photometric configurations are available for use in the various environments where this type of luminaire might be installed, meaning it can be adapted to suit all situations:



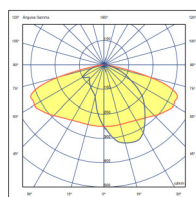
ACE3



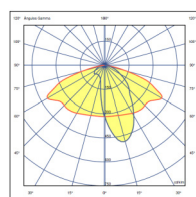
ACE4



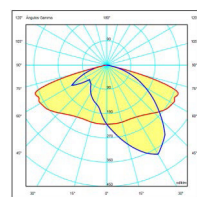
ACM4



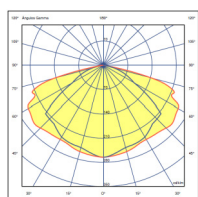
ALA3



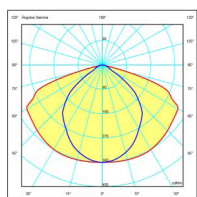
AME5



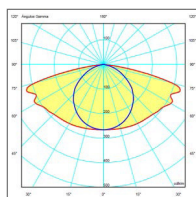
AMM6



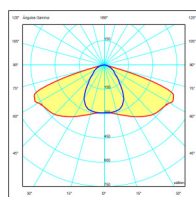
SCA1



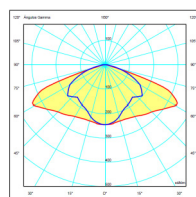
SCE6



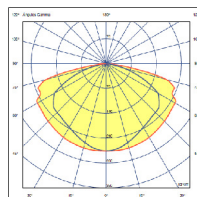
SME2



SME3



SME4



SMM1

sizes



T-XTREME S



T-XTREME M



T-XTREME L

applications

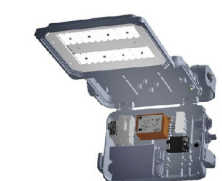
Tunnels, Underpasses, Roundabouts, Car parks, Sports facilities, Sports centres, Industrial warehouses, Loading docks.



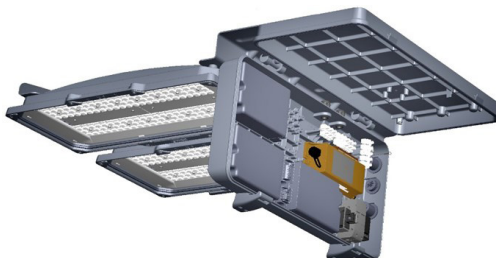
T-XTREME

maintenance

Easy maintenance: front tool-free access to drivers and quick connectors.



T-XTREME S



T-XTREME L



T-XTREME M



Electrical disconnection of modules without tools

fixtures

T-XTREME S

SP0: Side bracket adjustable $-30^\circ / +90^\circ$.
SC0: Cenital bracket adjustable $-20^\circ / +20^\circ$.
ST0: Ceiling bracket adjustable $-20^\circ / +90^\circ$.



T-XTREME M

MP4: Side bracket adjustable $-30^\circ / +90^\circ$ with GBOX attached.



MC9: Cenital bracket adjustable $-40^\circ / +40^\circ$ with GBOX separated from the wall - 90cm cable.

MD9: Cenital bracket adjustable $-40^\circ / +40^\circ$ with GBOX separated from the ceiling - 90cm cable.



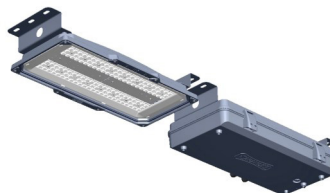
MT4: Ceiling bracket adjustable $0^\circ / +90^\circ$ with GBOX attached.



MP9: Side bracket adjustable $-45^\circ / +90^\circ$ with GBOX separated from the wall - 90cm cable.
MQ9: Side bracket adjustable $-45^\circ / +90^\circ$ with GBOX separate from the ceiling - 90cm cable.



MF9: Fixing zenithal fixation with GBOX separate to wall - 90cm cable.
MG9: Fixing zenithal fixation with GBOX separate to ceiling - 90cm cable.



MT9: Ceiling bracket adjustable $0^\circ / +90^\circ$ with separate box - 90 cm cable.
MS9: Ceiling bracket adjustable $0^\circ / +90^\circ$ with separate GBOX to ceiling - 90 cm cable.



T-XTREME

fixtures

T-XTREME L

LP4: Side bracket adjustable $-30^{\circ}/+90^{\circ}$ with GBOX attached.



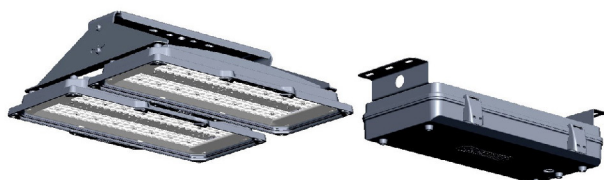
LP9: Side bracket adjustable $-45^{\circ}/+90^{\circ}$ with GBOX separated from the wall - 90cm cable.

LQ9: Side bracket adjustable $-45^{\circ}/+90^{\circ}$ with GBOX separated from the ceiling - 90cm cable.



LC9: Cenital bracket adjustable $-25^{\circ}/+25^{\circ}$ with GBOX separated from the wall - 90cm cable.

LD9: Cenital bracket adjustable $-25^{\circ}/+25^{\circ}$ with GBOX separate from the ceiling - 90cm cable.



LF9: Fixing zenithal fixed with GBOX separate to wall - 90cm cable.

LG9: Fixing zenithal fixed with GBOX separate from ceiling - 90cm cable.



LT4: Ceiling bracket adjustable $0^{\circ}/+90^{\circ}$ with GBOX attached.



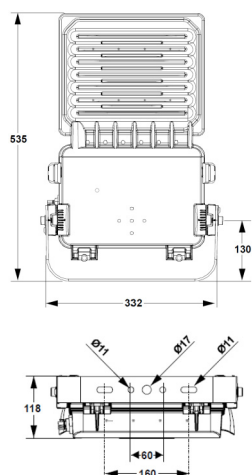
LT9: Ceiling bracket adjustable $0^{\circ}/+90^{\circ}$ with GBOX separated from the wall - 90cm cable.

LS9: Ceiling bracket adjustable $0^{\circ}/+90^{\circ}$ with GBOX separated from the ceiling - 90cm cable.

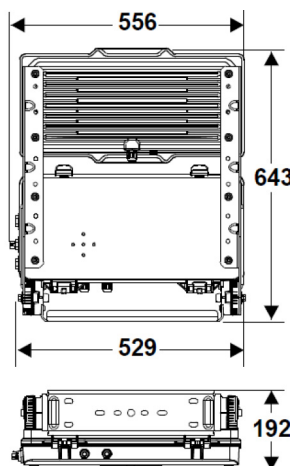


dimensions

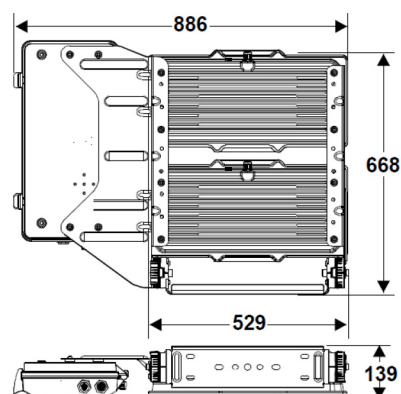
T-XTREME S



T-XTREME M



T-XTREME L



detailed specification

side covers	Die-cast aluminium EN AC 44100. Low Cu content <0,15%
closure	High transmittance tempered flat glass, 5mm thick.
mounts	Painted steel with anti-corrosion treatment.
finish	Slate grey polyester powder paint RAL 7015 textured (7015T).
type of finishes	Standard polyester powder coating (C2-C3 according to ISO 9223-2012 standard). Optional: Optional anodised polyester powder coating (C5-CX according to ISO 9223-2012 standard).
fixings	A4 stainless steel (AISI 316)
galvanic isolation	To prevent galvanic corrosion, incorporates molded technical polymer insulators at the joints of LED and GBOX modules with the metal supports.
IP rating	According to EN 60598-1 and EN 60529:Level of luminaire ingress protection IP66. Level of GBOX ingress protection IP66. Level of protection against high-pressure water jet IP69K (Luminaire and GBOX). Connector and cable gland IP68/IP69K.
IK rating	IK10 (EN 62262).
operating temperature	Ta -40°C to +50°C According to luminaire configuration
lifespan	L90B10 100,000 h at Ta 25°C. Light maintenance values at 25°C. Calculated by TM-21 based on LM-80 data.

electrical characteristics

electrical class	Class I (For AC220-240V and AC120-277V driver) Class II (For AC220-240V driver)
input voltage	220 V - 240 V / 50 Hz - 60 Hz Optional 100 V- 277 V
power factor (at full load)	> 0.9
surge protection	Surge protection device (1.2 / 50) 10 kV. Maximum current (8/20) 10 kA. Maximum service voltage (L-N) 320 V. Maximum service voltage (L/N-GND) 400 V. Optional overvoltage protection: 20 kA, 20 kV

lighting characteristics

Lumen output	TXR M1: c.4,000-23,000lm TXR M2: c.25,000-38,000lm TXR M3: c.40,000-75,000lm
LED color temperature	4,000 K (Neutral White, nw). 3,000 K (Warm White, ww). Other colour temperatures, upon request.
ULR / ULR	0.00 - 0.02%
Optics	Acrylic PMMA lenses especially designed for LEDs.
LED thermal control	Temperature dissipation by the 3 principles of heat transfer (conduction, convection and radiation), through design modularity, body ventilation channels and levera-ging the Venturi effect of the tunnel.
Photometric distributions	ACE3: Throw angle 50° spread angle 60° (Type II) ACE4: Throw angle 50°/60° spread angle 70°(Type II) ACM4: Throw angle 50° spread angle 65° (Type II) ALA3: Throw angle 30°/60° spread angle 70° (Type III) AME5: Throw angle 15°/45° spread angle 60° (Type II) AMM6: Throw angle 30°/60° spread angle 70° (Type III) SCA1: Throw angle 50° spread angle 70° (Type III) SCE6: Throw angle 50° spread angle 60° (Type II) SME2: Throw angle 60° spread angle 75° (Type II) SME3: Throw angle 30° spread angle 65° (Type I) SME4: Throw angle 50° spread angle 65° (Type III) SMM1: Throw angle 60° spread angle 75° (Type III)

finishes

Corrosion protection



RAL 7015 Textured

Slate grey polyester powder paint RAL 7015 textured

Predefined luminaire colour



Marine Finish (1.000h) (Optional)

maintenance

maintenance and installation

Tool-free opening from the front for easy maintenance Mechanical lens mounting with bolts (no adhesives).

orientation

Rotatable Brackets (alignment every 5° with swivel joint).

TUNNEL FIX

Different mounting systems (from top, side, separated box, attached box, etc.)

TXR S:

SP0: TXR S_Side bracket adjustable -30°/+90°.

SC0: TXR S_Cenital bracket adjustable -20°/+20°.

ST0: TXR S_Ceiling bracket adjustable -20°/+90°.

TXR M:

MP4: TXR M_Side bracket adjustable 30°/+90° with GBOX attached.

MP9: TXR M_Side bracket adjustable -45°/+90° with GBOX separated from the wall - 90cm cable.

MQ9: TXR M_Side bracket adjustable -45°/+90° with GBOX separate from the ceiling - 90cm cable.

MC9: TXR M_Cenital bracket adjustable -40°/+40° with GBOX separated from the wall - 90cm cable.

MD9: TXR M_Cenital bracket adjustable -40°/+40° with GBOX separated from the ceiling - 90cm cable.

MF9: TXR M_Fixing zenithal fixation with GBOX separate to wall - 90cm cable.

MG9: TXR M_Fixing zenithal fixation with GBOX separate to ceiling - 90cm cable.

MT4: TXR M_Ceiling bracket adjustable 0°/+90° with GBOX attached.

MT9: Ceiling bracket adjustable 0°/+90° with separate box - 90 cm cable.

MS9: Ceiling bracket adjustable 0°/+90° with separate GBOX to ceiling - 90 cm cable.

TXR L:

LP4: TXR L_Side bracket adjustable -30°/+90° with GBOX attached.

LP9: TXR L_Side bracket adjustable -45°/+90° with GBOX separated from the wall - 90cm cable.

LQ9: TXR L_Side bracket adjustable -45°/+90° with GBOX separated from the ceiling - 90cm cable.

LC9: TXR L_Cenital bracket adjustable -25°/+25° with GBOX separated from the wall - 90cm cable.

LD9: TXR L_Cenital bracket adjustable -25°/+25° with GBOX separate from the ceiling - 90cm cable.

LF9: TXR L_Fixing zenithal fixed with GBOX separate to wall - 90cm cable.

LG9: TXR L_Fixing zenithal fixed with GBOX separate from ceiling - 90cm cable.

LT4: TXR L_Ceiling bracket adjustable 0°/+90° with GBOX attached.

LT9: TXR L_Ceiling bracket adjustable 0°/+90° with GBOX separated from the wall - 90cm cable.

LS9: TXR L_Ceiling bracket adjustable 0°/+90° with GBOX separated from the ceiling - 90cm cable.

mechanical resistance

The application of wind pressure is carried out according to UNE-EN 60598-2-3:2003:

The wind speed above ground level must be 150 km/h (41.67m/s). Over the projection surface of the floodlight assembly without excessive deviations.

windage

S: 0.136m² M: 0.296m² L: 0.528 m²


weight

S: 7.80kg M: 20kg L: 30kg

cables

Standard power wire from separate equipment box to LED module: 1m. Optional 2.5m and 5m accessory wires.

ordering

Code		Luminaire (required)									
TXR		T-EXTREME									
Code		Series (required)									
.1		Series 1									
Code		Operation Package (required)									
.M1		Small Single Module									
.M2		Medium Single Module									
.M3		Large Double Module									
Code		Lamp Type (required)									
.LA044		LED light engine producing c.4,000 lm with a nominal 4000K colour temperature					M1 Size				
to .LA234		LED light engine producing c.23,000 lm with a nominal 4000K colour temperature									
.LA254		LED light engine producing c.18,000 lm with a nominal 4000K colour temperature					M2 Size				
to .LA384		LED light engine producing c.38,000 lm with a nominal 4000K colour temperature									
.LA404		LED light engine producing c.36,000 lm with a nominal 4000K colour temperature					M3 Size				
to .LA754		LED light engine producing c.75,000 lm with a nominal 4000K colour temperature									
.LA043		LED light engine producing c.4,000 lm with a nominal 3000K colour temperature					M1 Size				
to .LA223		LED light engine producing c.22,000 lm with a nominal 3000K colour temperature									
.LA243		LED light engine producing c.17,000 lm with a nominal 3000K colour temperature					M2 Size				
to .LA373		LED light engine producing c.37,000 lm with a nominal 3000K colour temperature									
.LA403		LED light engine producing c.35,000 lm with a nominal 3000K colour temperature					M3 Size				
to .LA723		LED light engine producing c.72,000 lm with a nominal 3000K colour temperature									
Code		Optical Distribution (required)									
.ACE3		Throw angle 50° spread angle 60° (Type II)									
.ACE4		Throw angle 50°/60° spread angle 70° (Type II)									
.ACM4		Throw angle 50° spread angle 65° (Type II)									
.ALA3		Throw angle 30°/60°spread angle 70° (Type III)									
.AME5		Throw angle 15°/45v spread angle 60° (Type II)									
.AMM6		Throw angle 30°/60° spread angle 70° (Type III)									
.SCA1		Throw angle 50° spread angle 70° (Type III)									
.SCE6		Throw angle 50° spread angle 60° (Type II)									
.SME2		Throw angle 60° spread angle 75° (Type II)									
.SME3		Throw angle 30° spread angle 65° (Type I)									
.SME4		Throw angle 50° spread angle 65° (Type III)									
.SMM1		Throw angle 60° spread angle 75° (Type III)									
Code		Fixing Method (required)									
.SP0		Side bracket adjustable -30°/+90° (M1 - Single single module)									
.SC0		Cenital bracket adjustable -20°/+20° (M1 - Single single module)									
.ST0		Ceiling bracket adjustable -20°/+90° (M1 - Single single module)									
.MP4		Side bracket adjustable - 30°/+90° with GBOX attached (M2 - Medium single module)									
.LP4		Side bracket adjustable - 30°/+90° with GBOX attached (M3 - Large double module)									
.MP9		Side bracket adjustable - 45°/+90° with GBOX separated from the wall- 90cm cable (M2 - Medium single module)									
.MQ9		Side bracket adjustable - 45°/+90° with GBOX separate from the ceiling - 90cm cable (M2 - Medium single module)									
.LP9		Side bracket adjustable - 45°/+90° with GBOX separated from the wall - 90cm cable (M3 - Large double module)									
.LQ9		Side bracket adjustable - 45°/+90° with GBOX separated from the ceiling - 90cm cable (M3 - Large double module)									
.MC9		Cenital bracket adjustable - 40°/+40° with GBOX separated from the wall - 90cm cable (M2 - Medium single module)									
.MD9		Cenital bracket adjustable - 40°/+40° with GBOX separated from the ceiling - 90cm cable (M2 - Medium single module)									
.LC9		Cenital bracket adjustable - 25°/+25° with GBOX separated from the wall - 90cm cable (M3 - Large double module)									
.LD9		Cenital bracket adjustable - 25°/+25° with GBOX separate from the ceiling - 90cm cable (M3 - Large double module)									
.MF9		Fixing zenithal fixation with GBOX separate to wall - 90cm cable (M2 - Medium single module)									
.MG9		Fixing zenithal fixation with GBOX separate to ceiling - 90cm cable (M2 - Medium single module)									
.LF9		Fixing zenithal fixed with GBOX separate to wall - 90cm cable (M3 - Large double module)									
.LG9		Fixing zenithal fixed with GBOX separate from ceiling - 90cm cable (M3 - Large double module)									
.MT4		Ceiling bracket adjustable 0°/+90° with GBOX attached (M2 - Medium single module)									
.LT4		Ceiling bracket adjustable 0°/+90° with GBOX attached (M3 - Large double module)									
.MT9		Ceiling bracket adjustable 0°/+90° with separate box - 90 cm cable (M2 - Medium single module)									
.MS9		Ceiling bracket adjustable 0°/+90° with separate GBOX to ceiling - 90 cm cable (M2 - Medium single module)									
.LT9		Ceiling bracket adjustable 0°/+90° with GBOX separated from the wall - 90cm cable (M3 - Large double module)									
.LS9		Ceiling bracket adjustable 0°/+90° with GBOX separated from the ceiling - 90cm cable (M3 - Large double module)									
Code		Colour (required)									
.C6		Textured Grey (RAL7015)									
.RAL****		RAL Colour (Customer choice)									
Code		Dimming Outputs (option)									
.LRD		DALI									
Code		Photocells (option)									
.T7		Complete with 7-pin dimming NEMA ANSI C136.41 socket (photocell/node supplied by others) without locking top									
.T7T		Complete with 7-pin dimming NEMA ANSI C136.41 socket (photocell/node supplied by others) with weather proof locking top									
.TZ01		Complete with 4-Pin Zhaga Socket - 'Top' (suitable photocell/node supplied by others) with weather proof locking cap									
.TZ02		Complete with 4-Pin Zhaga Socket - 'Bottom' (suitable photocell/node supplied by others) with weather proof locking cap									
.TZ03		Complete with 4-Pin Zhaga Socket - 'Top & bottom' (suitable photocell/node supplied by others) with weather proof locking cap									
Code		Voltage (option)									
.CII		Class II									
Code		Auxiliary Circuits (option)									
.KV		With 10KV surge protection									
TXR	.M1	.LA044	.ACE3	.SPO	.C6	.LRD	.T5	.CII	.KV		
Example											






T-Xtreme Tunnel



Speak to the Holophane experts today

Get in touch to discover how, together, we can ensure your lighting space works for you and the planet.

 Holophane Europe Ltd.
Bond Avenue, Bletchley,
Milton Keynes, Bucks, MK1 1JG

 01908 649292
 info@holophane.co.uk
 holophane.co.uk

HOL-BRO-TXR-UK-02/25

