



# POL3

7028

Indoor and outdoor led floodlight. Die cast aluminium body, coated with polyester anticorrosion powder, silver or anthracite color. 4 mm thick tempered transparent glass, silicon gasket, electronic driver 220-240V 50/60Hz. Manufactured in accordance with EN / IEC 60598-1.

## MAIN FEATURES

-  Class I
-  Ground
-  Wall
-  Pole
-  Ceiling
-  CRI >80  
CRI >90
-  Mac Adams 3
-  IK 08
-  IP 66
-  10 kV  
Surge Protection
-   Silver  
 Anthracite
-  100% regenerable
-  EN / IEC  
60598-1
-  RG0/RG1
-  L90-B10 >100.000 h
-  Ball Test  
DIN 18032-3



## CODING

Art.	+	Mod.	+	°K (CRI)	+	W. tot.	+	Options	<input type="radio"/> Silver	Options	<input checked="" type="radio"/> Antracite
7028		PR		2 = ambra (CRI >80)		125		GL = on/off		EL = on/off	
		CR		3 = 3000°K (CRI >80)		130		GD = dali		LD = dali	
		AR		4 = 4000°K (CRI >80)		148		GV = shatterproof glass		VI = shatterproof glass	
		RR		5 = 5000°K (CRI >80)		150		GA = acid-etched glass		VA = acid-etched glass	
				6 = 6500°K (CRI >80)		175					
				7 = 5700°K (CRI >80)		190					
				8 = 5700°K (CRI >90)							
				S = 4000°K (CRI >70)							

## Δ LUMEN

	°K	CRI	% Lm
2	ambra	> 80	-19.85%
3	3000	> 80	-5.28%
4	4000	> 80	standard
5	5000	> 80	+0.90%
6	6500	> 80	+0.00%
7	5700	> 80	+1.00%
8	5700	> 90	-13.13%
S	4000	> 70	+5.85%

## STANDARD EQUIPMENT



- 1000 mm long H07RN-F 3x1mm<sup>2</sup> neoprene cable.



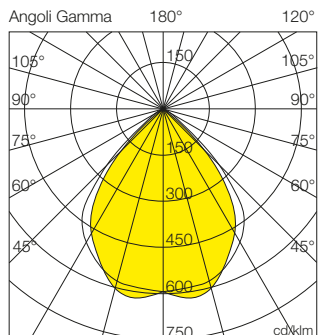
- 10kV Surge Protection.

- Cable gland with integrated anti-condensation valve.



# POL3

mod.PR

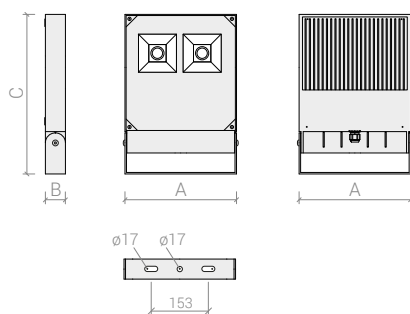


## Optic

90° wide beam matt satin aluminium reflector.

## DIMENSIONS

	A (mm)	B (mm)	C (mm)	Kg	IP
D1	295	55	425	5,6	0,126 m <sup>2</sup>



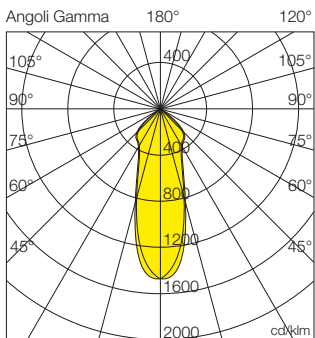
## EXAMPLE OF ARTICLE CODING 4000K - CRI>80 - ON/OFF

## PERFORMANCE

Code	W tot.	°K - CRI	Lm OUTPUT	Lm/W	dimension	Color
7028PR4125GL	125	4000K - CRI>80	18468	148	D1	○
7028PR4130GL	130	4000K - CRI>80	20188	155	D1	○
7028PR4148GL	148	4000K - CRI>80	21050	142	D1	○
7028PR4150GL	150	4000K - CRI>80	24595	164	D1	○
7028PR4175GL	175	4000K - CRI>80	26025	149	D1	○
7028PR4190GL	190	4000K - CRI>80	28392	149	D1	○

# POL3

mod.CR

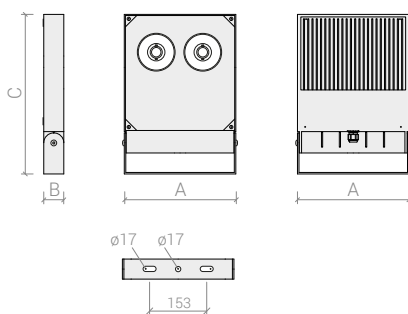


## Optic

29° narrow beam matt satin aluminium reflector.

## DIMENSIONS

	A (mm)	B (mm)	C (mm)	Kg	☼
D1	295	55	425	5,6	0,126 m <sup>2</sup>



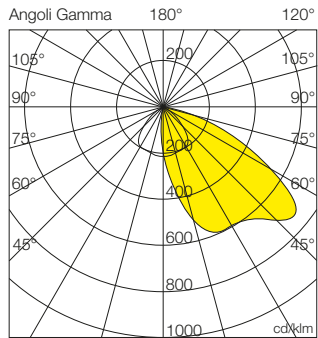
## EXAMPLE OF ARTICLE CODING 4000K - CRI>80 - ON/OFF

## PERFORMANCE

Code	W tot.	°K - CRI	Lm OUTPUT	Lm/W	dimension	Color
7028CR4125GL	125	4000K - CRI>80	17785	142	D1	○
7028CR4130GL	130	4000K - CRI>80	19441	150	D1	○
7028CR4148GL	148	4000K - CRI>80	20271	137	D1	○
7028CR4150GL	150	4000K - CRI>80	23685	158	D1	○
7028CR4175GL	175	4000K - CRI>80	25063	143	D1	○
7028CR4190GL	190	4000K - CRI>80	27342	144	D1	○

# POL3

mod.AR

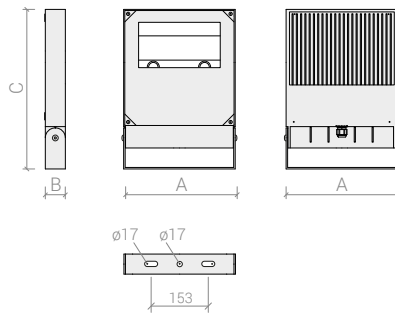


## Optic

45° asymmetric beam matt satin aluminium reflector.

## DIMENSIONS

	A (mm)	B (mm)	C (mm)	Kg	☼
D1	295	55	425	5,6	0,126 m <sup>2</sup>

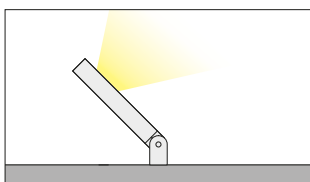


## EXAMPLE OF ARTICLE CODING 4000K - CRI>80 - ON/OFF

Code	W tot.	°K - CRI	Lm OUTPUT	Lm/W	dimension	Color
7028AR4125GL	125	4000K - CRI>80	17484	140	D1	○
7028AR4130GL	130	4000K - CRI>80	19111	147	D1	○
7028AR4148GL	148	4000K - CRI>80	19927	135	D1	○
7028AR4150GL	150	4000K - CRI>80	23284	155	D1	○
7028AR4175GL	175	4000K - CRI>80	24638	141	D1	○
7028AR4190GL	190	4000K - CRI>80	26879	141	D1	○

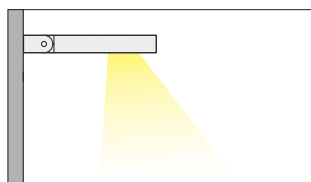
## INSTALLATION

### Ground installation



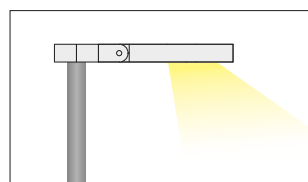
Ground installation.

### Wall installation



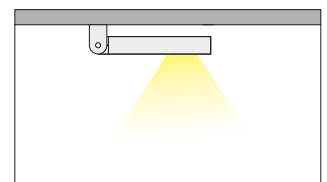
Wall installation.

### Pole installation



Top pole installation Ø60 mm. (ACC215 - ACC219)

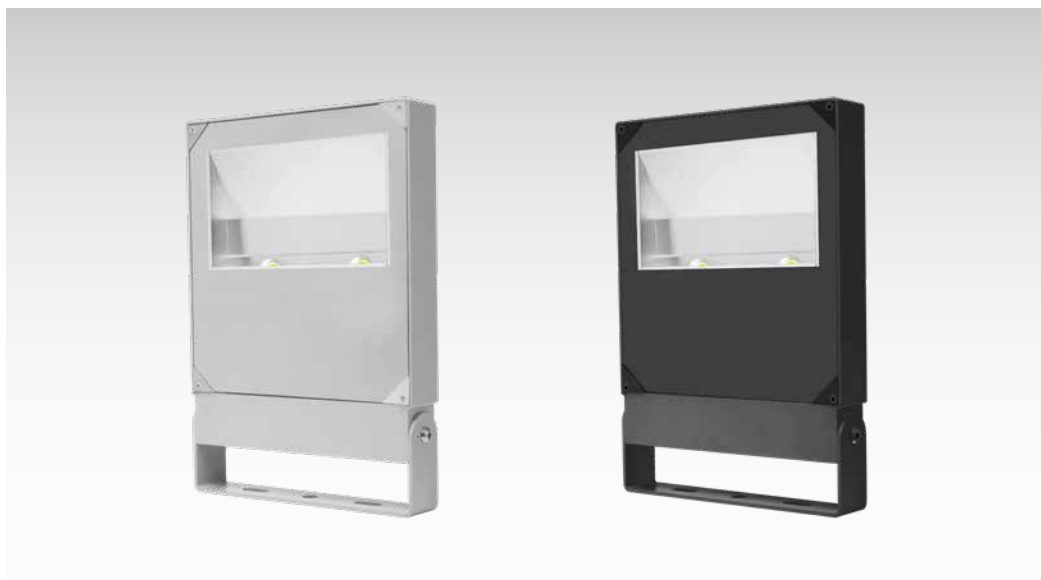
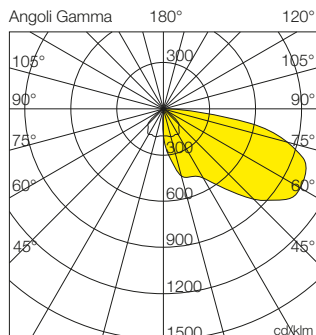
### Ceiling installation



Ceiling installation.

# POL3

mod.RR

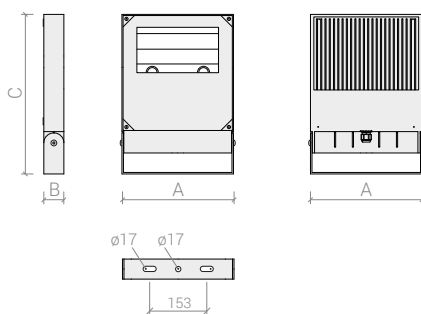


## Optic

65° asymmetric beam matt satin aluminium reflector.

## DIMENSIONS

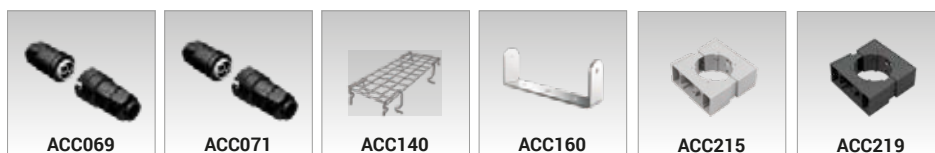
	A (mm)	B (mm)	C (mm)	Kg	☼
D1	295	55	425	5,6	0,126 m <sup>2</sup>



## EXAMPLE OF ARTICLE CODING 4000K - CRI>80 - ON/OFF

Code	W tot.	°K - CRI	Lm OUTPUT	Lm/W	dimension	Color
7028RR4125GL	125	4000K - CRI>80	16680	133	D1	○
7028RR4130GL	130	4000K - CRI>80	18233	140	D1	○
7028RR4148GL	148	4000K - CRI>80	19011	128	D1	○
7028RR4150GL	150	4000K - CRI>80	22213	148	D1	○
7028RR4175GL	175	4000K - CRI>80	23505	134	D1	○
7028RR4190GL	190	4000K - CRI>80	25643	135	D1	○

## ACCESSORIES



**ACC069** IP66 waterproof connector, 2P + E (16A - 400V). Color: black.

**ACC071** IP66 waterproof connector, 4P + E (16A - 400V). Color: black.

**ACC140** 370 x 280 mm chromed steel protection grid.

**ACC160** Bracket with marine treatment resistant to salt fog.

**ACC215** Floodlights pole bracket. Installation: top-pole, double top-pole, half pole and dable half-pole. Silver color.


**ACC219** Floodlights pole bracket. Installation: top-pole, double top-pole, half pole and dable half-pole. Anthracite color.

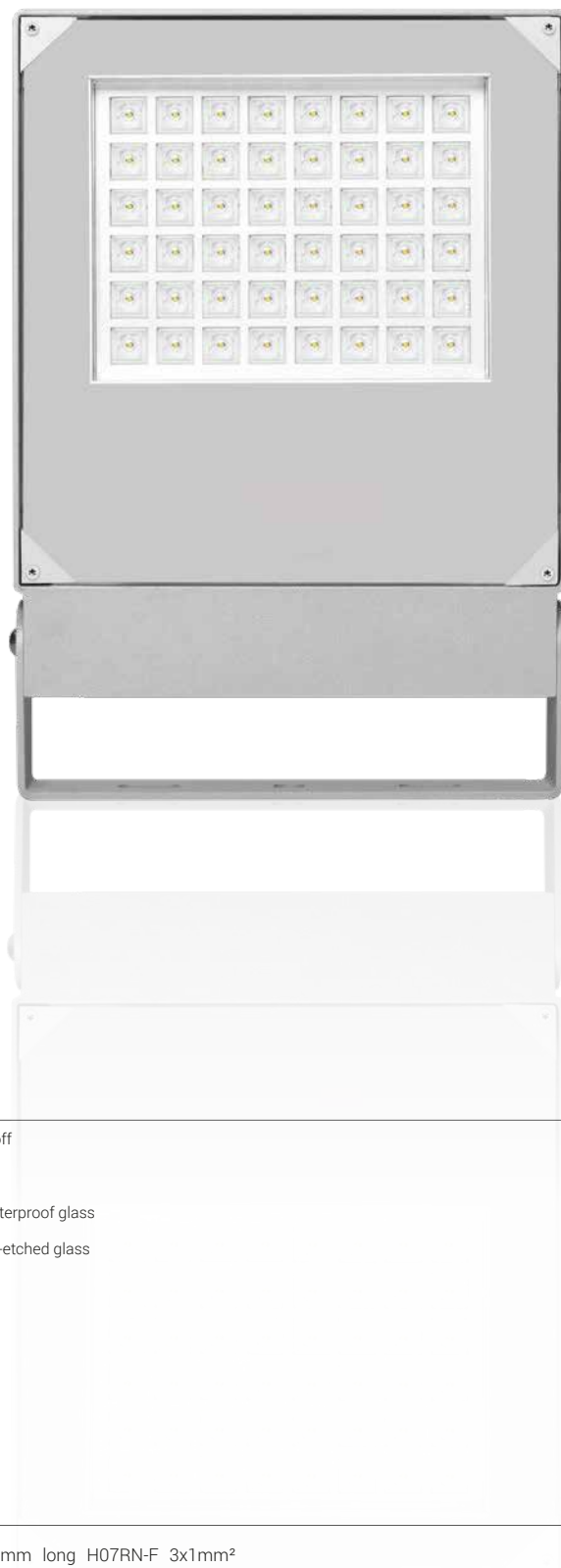
# POL3

7038

Indoor and outdoor led floodlight. Die cast aluminium body, coated with polyester anticorrosion powder, silver color, 4 mm thick tempered transparent glass, silicon gasket, electronic driver 220-240V 50/60Hz. Manufactured in accordance with EN / IEC 60598-1.

## MAIN FEATURES

-  Class I
-  Ground
-  Wall
-  Pole
-  Ceiling
-  CRI >80
-  Mac Adams 3
-  IK 08
-  IP 66
-  10 kV Surge Protection
-  Silver
-  100% regenerable
-  EN / IEC 60598-1
-  RG0/RG1
-  L90-B10 >100.000 h
-  Ball Test DIN 18032-3



## CODING

Art.	+	Mod.	+	°K (CRI)	+	W. tot.	+	Options
7038		S9	2	= ambra (CRI >80)	030	105	GL	= on/off
		M6	3	= 3000°K (CRI >80)	040	120	GD	= dali
		C3	4	= 4000°K (CRI >80)	050	125	GV	= shatterproof glass
		A5	5	= 5000°K (CRI >80)	054	130	GA	= acid-etched glass
		A6	6	= 6500°K (CRI >80)	068	135		
		ME			073	150		
					080	175		
					085	190		
					100			

## Δ LUMEN

°K	CRI	% Lm
2 ambra	> 80	-15.30%
3 3000	> 80	-6.25%
4 4000	> 80	standard
5 5000	> 80	+0.50%
6 6500	> 80	-6.25%

## STANDARD EQUIPMENT



- 1000 mm long H07RN-F 3x1mm<sup>2</sup> neoprene cable.

- 10kV Surge Protection.

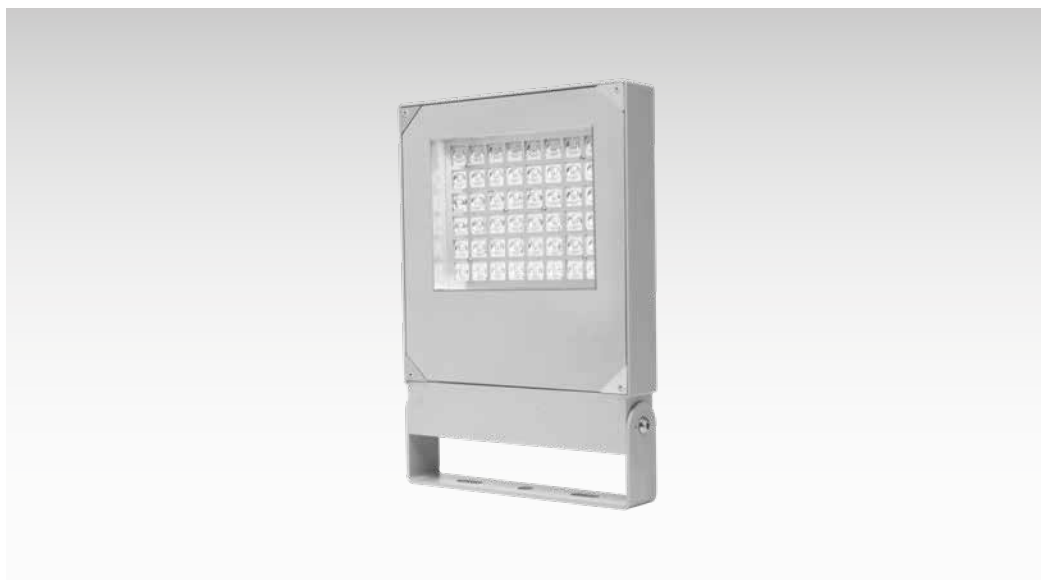
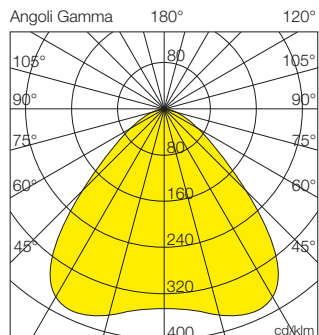
- Cable gland with integrated anti-condensation valve.





# POL3

mod.S9

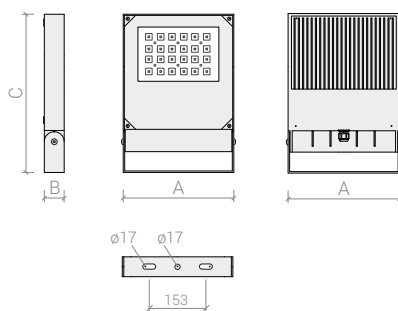


## Optic

90° wide beam high performance PMMA lenses.

## DIMENSIONS

	A (mm)	B (mm)	C (mm)	Kg	φ <sub>2</sub>
D1	295	55	425	5,6	0,126 m <sup>2</sup>



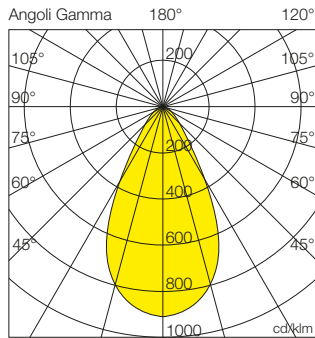
## EXAMPLE OF ARTICLE CODING 4000K - CRI>80 - ON/OFF

## PERFORMANCE

Code	W tot.	°K - CRI	Lm OUTPUT	Lm/W	dimension	Color
7038S94030GL	30	4000K - CRI>80	5386	180	D1	○
7038S94040GL	40	4000K - CRI>80	6758	169	D1	○
7038S94050GL	50	4000K - CRI>80	8431	169	D1	○
7038S94054GL	54	4000K - CRI>80	8761	162	D1	○
7038S94068GL	68	4000K - CRI>80	11015	162	D1	○
7038S94073GL	73	4000K - CRI>80	11643	159	D1	○
7038S94080GL	80	4000K - CRI>80	12723	159	D1	○
7038S94085GL	85	4000K - CRI>80	13840	163	D1	○
7038S94100GL	100	4000K - CRI>80	14959	150	D1	○
7038S94105GL	105	4000K - CRI>80	16350	156	D1	○
7038S94120GL	120	4000K - CRI>80	17223	144	D1	○
7038S94125GL	125	4000K - CRI>80	18967	152	D1	○
7038S94130GL	130	4000K - CRI>80	18173	140	D1	○
7038S94135GL	135	4000K - CRI>80	19944	148	D1	○
7038S94150GL	150	4000K - CRI>80	21851	146	D1	○
7038S94175GL	175	4000K - CRI>80	24409	139	D1	○
7038S94190GL	190	4000K - CRI>80	25811	136	D1	○

# POL3

mod.M6

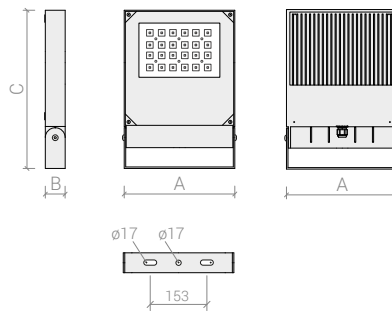


## Optic

56° medium beam high performance PMMA lenses.

## DIMENSIONS

	A (mm)	B (mm)	C (mm)	Kg	☼
D1	295	55	425	5,6	0,126 m <sup>2</sup>



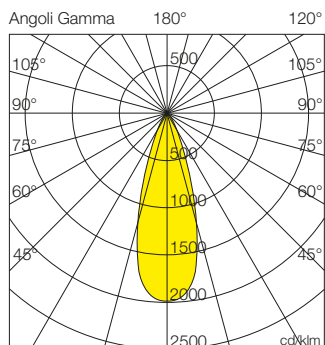
## EXAMPLE OF ARTICLE CODING 4000K - CRI>80 - ON/OFF

## PERFORMANCE

Code	W tot.	°K - CRI	Lm OUTPUT	Lm/W	dimension	Color
7038M64030GL	30	4000K - CRI>80	5327	178	D1	☉
7038M64040GL	40	4000K - CRI>80	6683	167	D1	☉
7038M64050GL	50	4000K - CRI>80	8339	167	D1	☉
7038M64054GL	54	4000K - CRI>80	8664	160	D1	☉
7038M64068GL	68	4000K - CRI>80	10894	160	D1	☉
7038M64073GL	73	4000K - CRI>80	11515	158	D1	☉
7038M64080GL	80	4000K - CRI>80	12583	157	D1	☉
7038M64085GL	85	4000K - CRI>80	13688	161	D1	☉
7038M64100GL	100	4000K - CRI>80	14794	148	D1	☉
7038M64105GL	105	4000K - CRI>80	16170	154	D1	☉
7038M64120GL	120	4000K - CRI>80	17033	142	D1	☉
7038M64125GL	125	4000K - CRI>80	18759	150	D1	☉
7038M64130GL	130	4000K - CRI>80	17973	138	D1	☉
7038M64135GL	135	4000K - CRI>80	19725	146	D1	☉
7038M64150GL	150	4000K - CRI>80	21611	144	D1	☉
7038M64175GL	175	4000K - CRI>80	24141	138	D1	☉
7038M64190GL	190	4000K - CRI>80	25528	134	D1	☉

# POL3

mod.C3

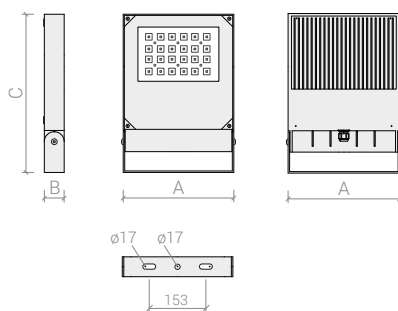


## Optic

32° narrow beam high performance PMMA lenses.

## DIMENSIONS

	A (mm)	B (mm)	C (mm)	Kg	Φ <sub>2</sub>
D1	295	55	425	5,6	0,126 m <sup>2</sup>



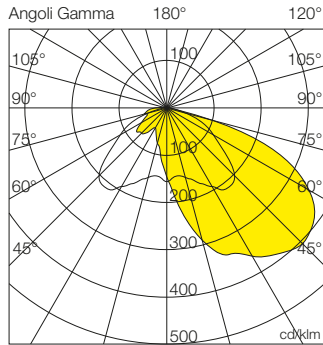
## EXAMPLE OF ARTICLE CODING 4000K - CRI>80 - ON/OFF

## PERFORMANCE

Code	W tot.	°K - CRI	Lm OUTPUT	Lm/W	dimension	Color
7038C34030GL	30	4000K - CRI>80	5357	179	D1	○
7038C34040GL	40	4000K - CRI>80	6721	168	D1	○
7038C34050GL	50	4000K - CRI>80	8385	168	D1	○
7038C34054GL	54	4000K - CRI>80	8712	161	D1	○
7038C34068GL	68	4000K - CRI>80	10954	161	D1	○
7038C34073GL	73	4000K - CRI>80	11579	159	D1	○
7038C34080GL	80	4000K - CRI>80	12653	158	D1	○
7038C34085GL	85	4000K - CRI>80	13764	162	D1	○
7038C34100GL	100	4000K - CRI>80	14876	149	D1	○
7038C34105GL	105	4000K - CRI>80	16260	155	D1	○
7038C34120GL	120	4000K - CRI>80	17128	143	D1	○
7038C34125GL	125	4000K - CRI>80	18863	151	D1	○
7038C34130GL	130	4000K - CRI>80	18073	139	D1	○
7038C34135GL	135	4000K - CRI>80	19835	147	D1	○
7038C34150GL	150	4000K - CRI>80	21731	145	D1	○
7038C34175GL	175	4000K - CRI>80	24275	139	D1	○
7038C34190GL	190	4000K - CRI>80	25669	135	D1	○

# POL3

mod.A5

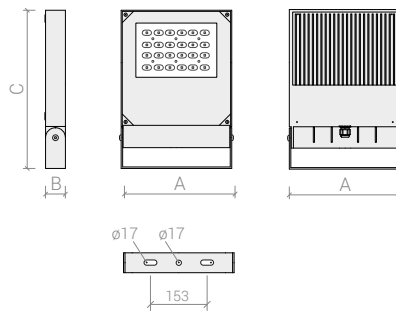


## Optic

55° asymmetric beam in high performance PMMA lenses.

## DIMENSIONS

	A (mm)	B (mm)	C (mm)	Kg	☼
D1	295	55	425	5,6	0,126 m <sup>2</sup>



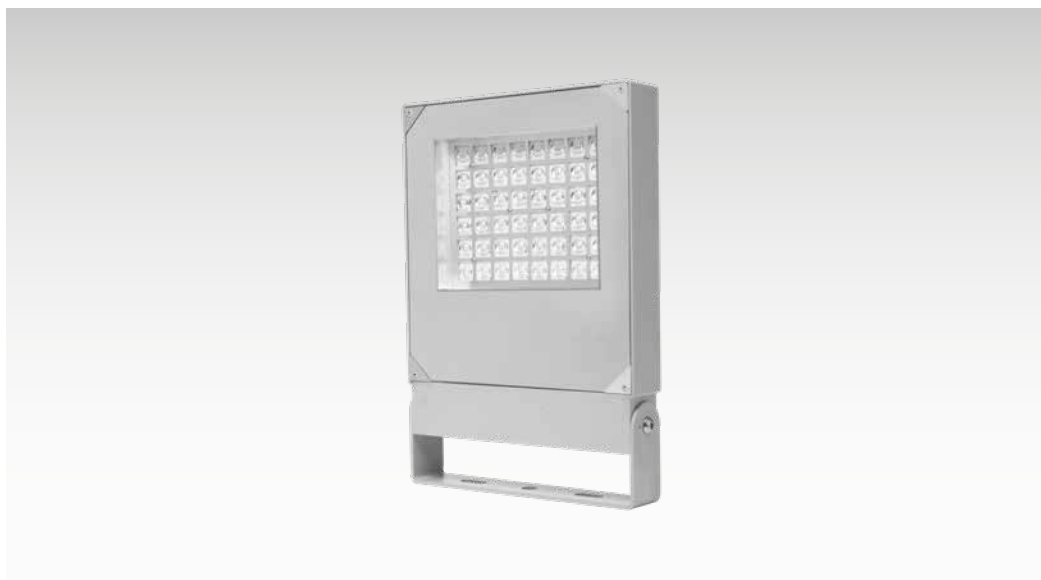
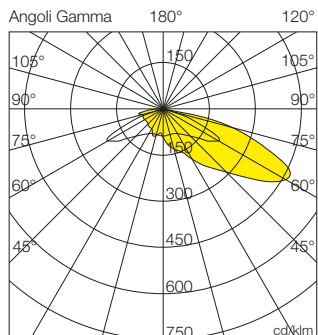
## EXAMPLE OF ARTICLE CODING 4000K - CRI>80 - ON/OFF

## PERFORMANCE

Code	W tot.	°K - CRI	Lm OUTPUT	Lm/W	dimension	Color
7038A54030GL	30	4000K - CRI>80	5268	176	D1	☉
7038A54040GL	40	4000K - CRI>80	6609	165	D1	☉
7038A54050GL	50	4000K - CRI>80	8246	165	D1	☉
7038A54054GL	54	4000K - CRI>80	8568	159	D1	☉
7038A54068GL	68	4000K - CRI>80	10773	158	D1	☉
7038A54073GL	73	4000K - CRI>80	11387	156	D1	☉
7038A54080GL	80	4000K - CRI>80	12443	156	D1	☉
7038A54085GL	85	4000K - CRI>80	13536	159	D1	☉
7038A54100GL	100	4000K - CRI>80	14630	146	D1	☉
7038A54105GL	105	4000K - CRI>80	15991	152	D1	☉
7038A54120GL	120	4000K - CRI>80	16844	140	D1	☉
7038A54125GL	125	4000K - CRI>80	18550	148	D1	☉
7038A54130GL	130	4000K - CRI>80	17773	137	D1	☉
7038A54135GL	135	4000K - CRI>80	19506	144	D1	☉
7038A54150GL	150	4000K - CRI>80	21371	142	D1	☉
7038A54175GL	175	4000K - CRI>80	23872	136	D1	☉
7038A54190GL	190	4000K - CRI>80	25244	133	D1	☉

# POL3

mod.A6

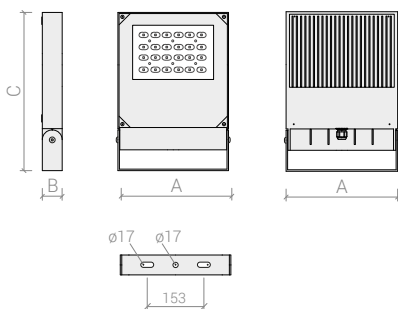


## Optic

65° asymmetric beam in high performance PMMA lenses.

## DIMENSIONS

	A (mm)	B (mm)	C (mm)	Kg	☼
D1	295	55	425	5,6	0,126 m <sup>2</sup>



## EXAMPLE OF ARTICLE CODING 4000K - CRI>80 - ON/OFF

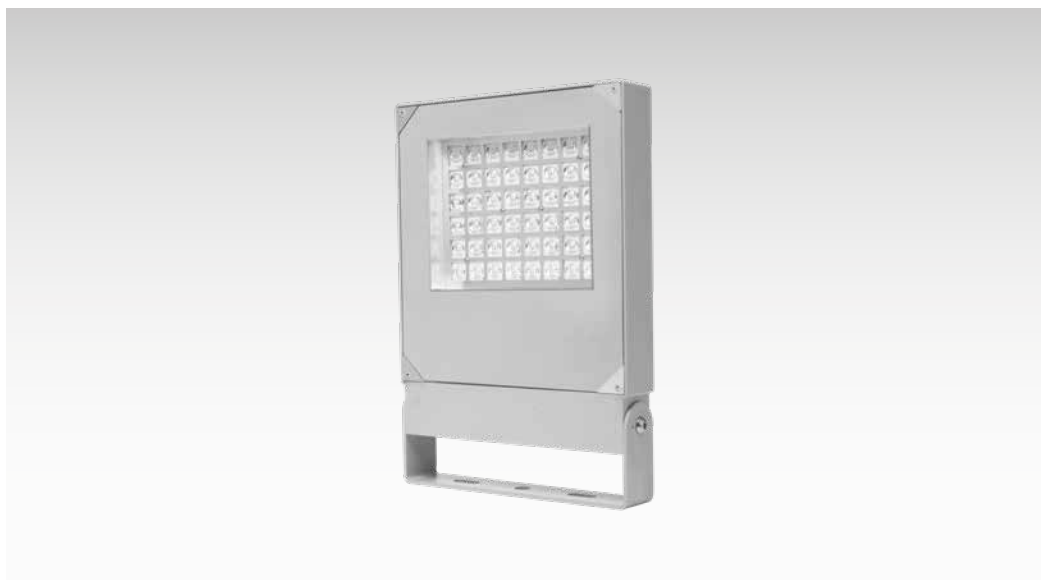
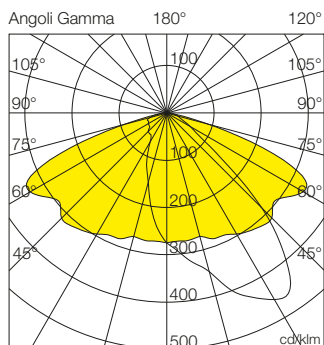
Code	W tot.	°K - CRI	Lm OUTPUT	Lm/W	dimension	Color
7038A64030GL	30	4000K - CRI>80	5209	174	D1	☉
7038A64040GL	40	4000K - CRI>80	6535	163	D1	☉
7038A64050GL	50	4000K - CRI>80	8153	163	D1	☉
7038A64054GL	54	4000K - CRI>80	8472	157	D1	☉
7038A64068GL	68	4000K - CRI>80	10652	157	D1	☉
7038A64073GL	73	4000K - CRI>80	11259	154	D1	☉
7038A64080GL	80	4000K - CRI>80	12303	154	D1	☉
7038A64085GL	85	4000K - CRI>80	13384	157	D1	☉
7038A64100GL	100	4000K - CRI>80	14465	145	D1	☉
7038A64105GL	105	4000K - CRI>80	15811	151	D1	☉
7038A64120GL	120	4000K - CRI>80	16655	139	D1	☉
7038A64125GL	125	4000K - CRI>80	18342	147	D1	☉
7038A64130GL	130	4000K - CRI>80	17574	135	D1	☉
7038A64135GL	135	4000K - CRI>80	19287	143	D1	☉
7038A64150GL	150	4000K - CRI>80	21131	141	D1	☉
7038A64175GL	175	4000K - CRI>80	23604	135	D1	☉
7038A64190GL	190	4000K - CRI>80	24960	131	D1	☉

## ACCESSORIES



# POL3

mod.ME

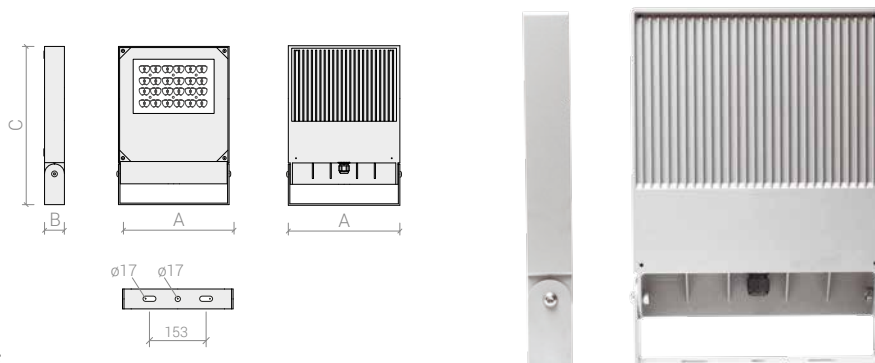


## Optic

EN13201 Class ME high performance PMMA asymmetrical streetlight lenses.

## DIMENSIONS

	A (mm)	B (mm)	C (mm)	Kg	ψ, S
D1	295	55	425	5,6	0,126 m <sup>2</sup>



## EXAMPLE OF ARTICLE CODING 4000K - CRI>80 - ON/OFF

Code	W tot.	°K - CRI	Lm OUTPUT	Lm/W	dimension	Color
7038ME4030GL	30	4000K - CRI>80	5150	172	D1	○
7038ME4040GL	40	4000K - CRI>80	6461	162	D1	○
7038ME4050GL	50	4000K - CRI>80	8061	161	D1	○
7038ME4054GL	54	4000K - CRI>80	8375	155	D1	○
7038ME4068GL	68	4000K - CRI>80	10530	155	D1	○
7038ME4073GL	73	4000K - CRI>80	11131	152	D1	○
7038ME4080GL	80	4000K - CRI>80	12163	152	D1	○
7038ME4085GL	85	4000K - CRI>80	13232	156	D1	○
7038ME4100GL	100	4000K - CRI>80	14301	143	D1	○
7038ME4105GL	105	4000K - CRI>80	15631	149	D1	○
7038ME4120GL	120	4000K - CRI>80	16466	137	D1	○
7038ME4125GL	125	4000K - CRI>80	18133	145	D1	○
7038ME4130GL	130	4000K - CRI>80	17374	134	D1	○
7038ME4135GL	135	4000K - CRI>80	19068	141	D1	○
7038ME4150GL	150	4000K - CRI>80	20890	139	D1	○
7038ME4175GL	175	4000K - CRI>80	23336	133	D1	○
7038ME4190GL	190	4000K - CRI>80	24677	130	D1	○

**ACC069** IP66 waterproof connector, 2P + E (16A - 400V). Color: black.

**ACC160** Bracket with marine treatment resistant to salt fog.

**ACC071** IP66 waterproof connector, 4P + E (16A - 400V). Color: black.

**ACC215** Floodlights pole bracket. Installation: top-pole, double top-pole, half pole and dable half-pole. Silver color.

**ACC140** 370 x 280 mm chromed steel protection grid.