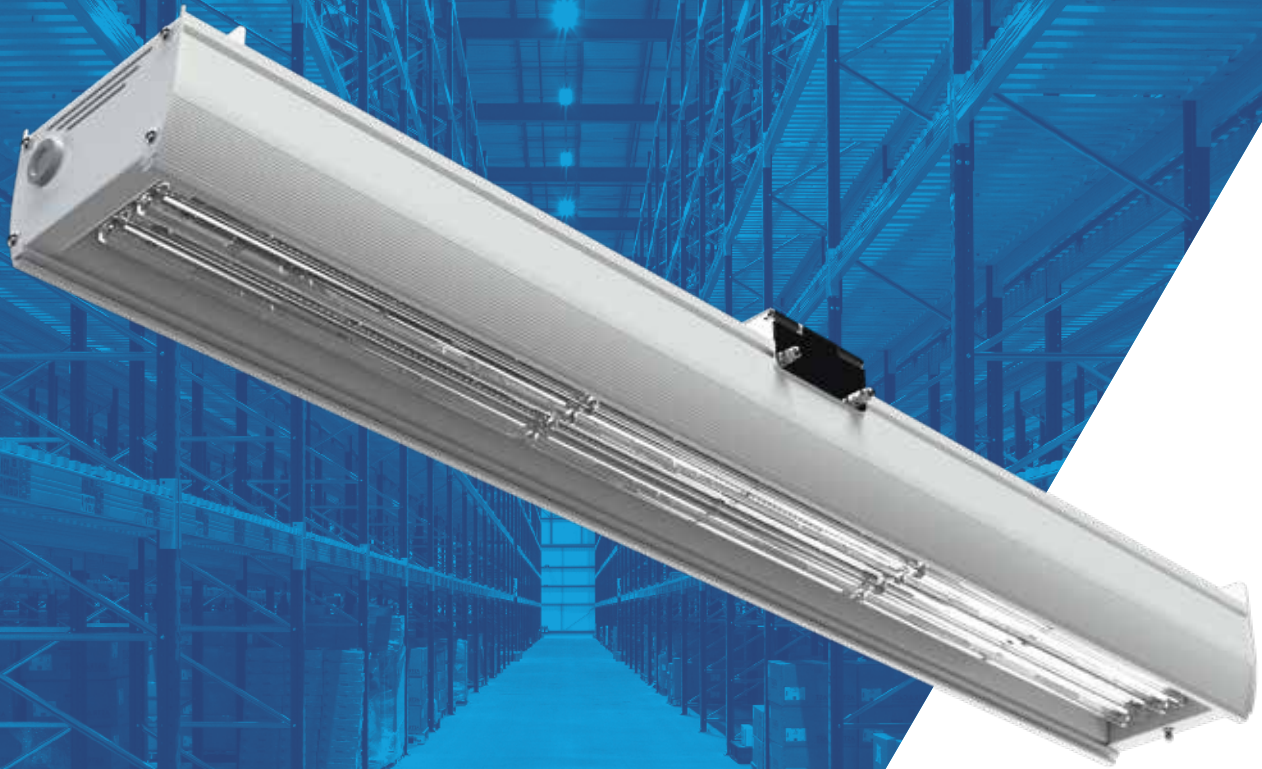


# HI-BEAM



HI BEAM



**HOLOPHANE**<sup>®</sup>

Patented Transition Zone Technology

HI BEAM

# HIGHBAY HI-BEAM

BRINGING EFFICIENCY  
TO WAREHOUSING

**HI-BEAM** is the next generation in LED high-bay lighting. Specifically designed for aisle and racking applications, HI-BEAM delivers outstanding lighting performance to Warehousing and Logistics Centres.

Featuring innovative integrated features, HI-BEAM enables fast installation and maintenance ensuring minimal disruption to logistical operations. Saving time and money.

The latest controls solutions are also available with HI-BEAM. From PIR to cloud-based controls, HI-BEAM can be configured with a controls solution to suit project needs. Increasing the energy savings and site optimisation further.

For over 125 years Holophane has enjoyed an enviable reputation throughout the world for expertise, quality and innovation in Lighting. From the earliest days, when the company pioneered its famous glass refractor, the Holophane name has been ever present as a leader in the field of luminaire and lighting design. HI-BEAM is a continuation of this proud tradition and builds on our heritage of designing luminaires with exceptional optical performance and thermal management which fused together deliver a solution that is future-proof and fully serviceable.

#### Applications

- Warehousing
- Logistics Centres
- Sheds
- Racking & Aisles

#### Overview

- Available with lumen ranges from 20,000 to 40,000 (delivered lumens).
- A specifically developed optic for racking and aisles
- 4000K (5700K available on request)
- CRI > 80
- Available with integrated PIRs or compatible with cloud-based HOLOS Air system

#### TM66 CEAM-Make Rating

Preliminary Rating: 2.3 (Definite/substantial progress to circularity).

#### Approvals



Complies with EN60598

IP20

IK09

#### Contractor Select

Below are the configurations available on shorter lead times from Holophane:

-HIB.1.LM2048.M1.TD.TK.C1.FL1.LRD

-HIB.1.LM2548.M1.TD.TK.C1.FL1.LRD



For further information please visit the Holophane website [www.holophane.co.uk](http://www.holophane.co.uk)

## PRODUCT FEATURES

### Outstanding lighting performance

HI-BEAM features optics that have been specifically designed for racking and aisles. These provide market leading Lux levels and uniformity at up to 20m mounting heights.

### 3 Lengths for flexible output

HI-BEAM is available in 3 sizes dependent on lumen output required. This ensures maximum material utilisation relative to its lumen output.



20,000 or 25,000 lm  
630mm nominal length



30,000 lm  
915mm nominal length



35,000 or 40,000 lm  
1200mm nominal length

### Easy Installation & Maintenance

Today's warehousing and logistics centres are almost in constant operation and lighting plays a critical role in ensuring smooth operations.

HI-BEAM has been designed with innovative features to ensure quick installation and tool-less maintenance. Ensuring warehousing operations can remain running and also saving down-time costs

### Universal Bracket Adapter

HI-BEAM features a universal mounting bracket. This adapter allows the installer to use a range of bracket accessories applicable to the trunking or busbar used.

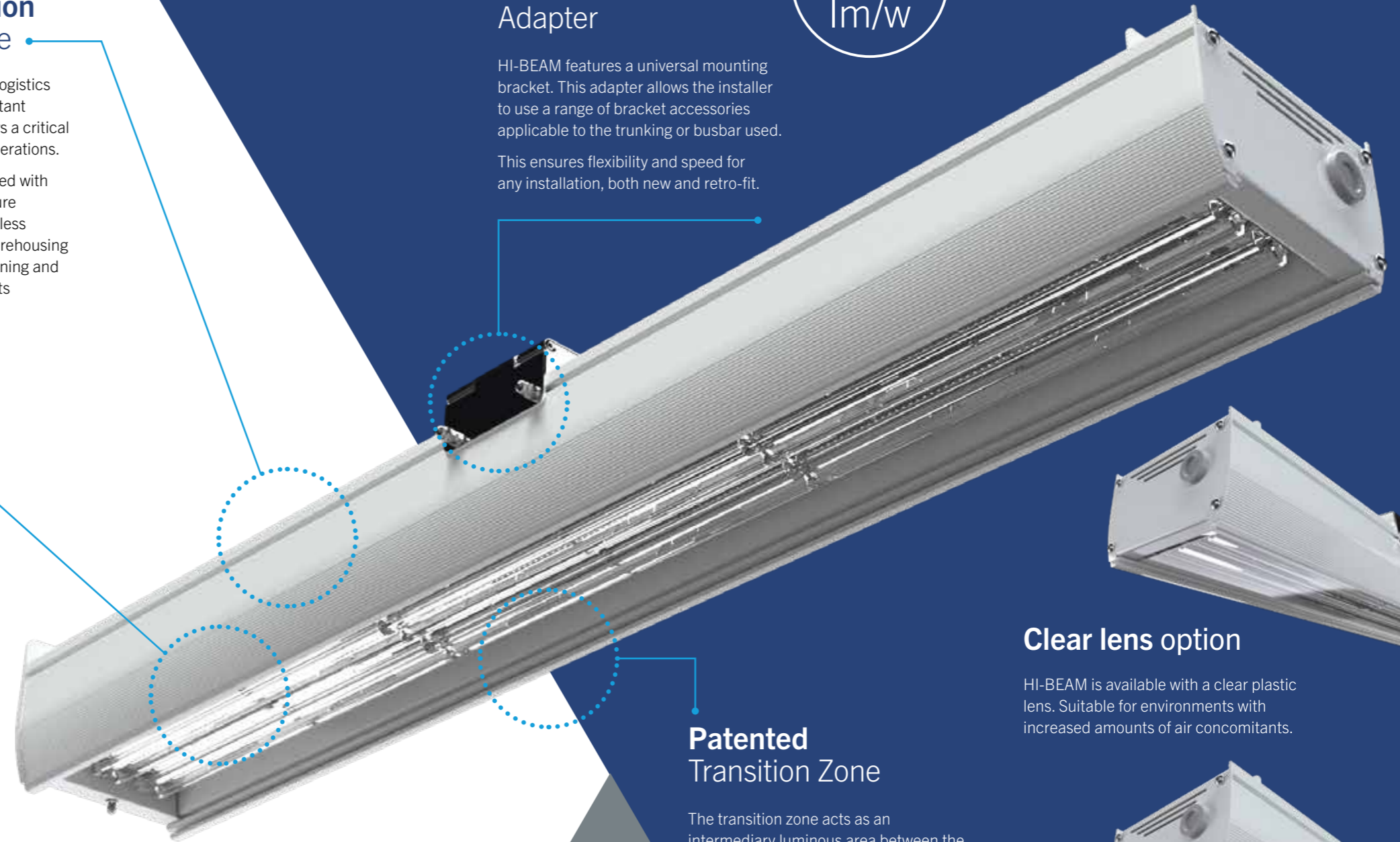
This ensures flexibility and speed for any installation, both new and retro-fit.

IP20

IK09

165  
lm/w

# HIGHBAY HI-BEAM



### Patented Transition Zone

The transition zone acts as an intermediary luminous area between the brighter LEDs and the darker surfaces surrounding the luminaire. This cascade of contrast ratios drastically reduces the perception of glare and provides a softer appearance to the light source.

### Clear lens option

HI-BEAM is available with a clear plastic lens. Suitable for environments with increased amounts of air concomitants.

### Frosted lens option

HI-BEAM is available with a frosted lens. Suitable for opens areas within logistics and warehouse applications.

# OUTSTANDING PERFORMANCE

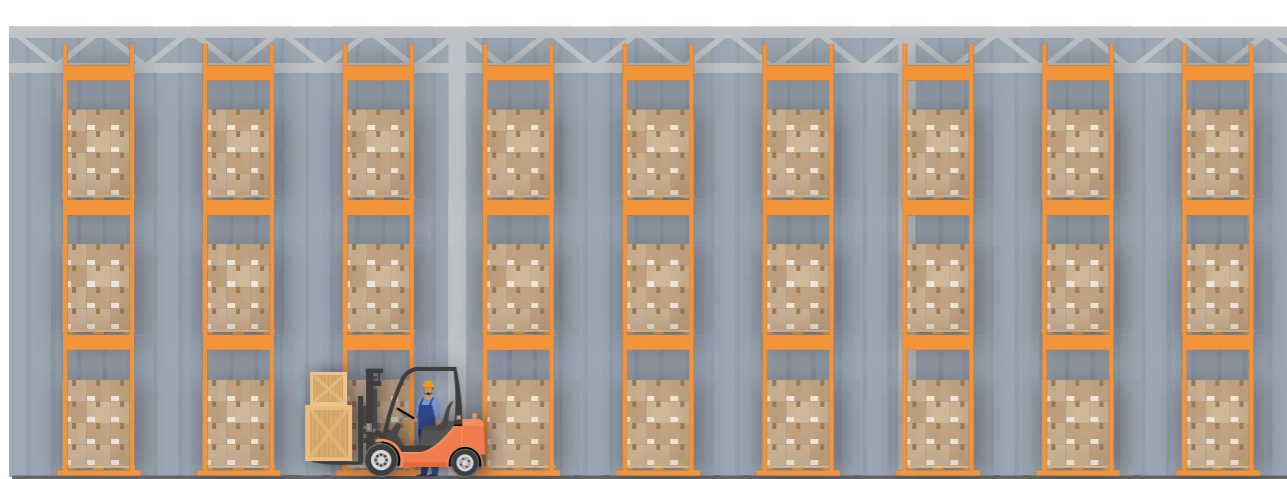
The HI-BEAM features bespoke PMMA optics that have been designed specifically for aisle and racking applications.

In this application the precise control of light is needed to ensure lux levels are met at ground level whilst maximising luminaire spacings and achieving good levels of uniformity.

## Warehouse Fit-out

### Scenario Parameters

Number of racks	Reflectance	Dimensions
9 racks	C50%/W30%/F20%	80m Rack length / 2m width / 16m height
Mounting Height	Target Illuminance	
16 m	200 lux 0.6 Uniformity (Uo)	



# OUTSTANDING PERFORMANCE

Configuration	HI-BEAM	Competitor 1	Competitor 2	Competitor 3
Lumens	c.20,000	c.22,000	c.25,000	c.20,000
lm/W	159	157	168	118
Wattage	126	143	149	176
No. of Fittings per Rack	7	9	10	12
Total Luminaires	63	81	90	108
Total Wattage	7938	11583	13470	19008
Average Lux level	201	206	217	212
Min Lux level	121	119	126	124
Max Lux level	223	221	235	233
Uniformity (Uo)	0.6	0.58	0.58	0.58

**Note:** in this design every 1 in 2 HI-BEAM luminaires would feature emergency gear to meet required emergency lux-levels.



**UP TO 41% LESS FITTINGS**



**UP TO 59% MORE EFFICIENT**



**LESS INSTALL TIME**

# HI-BEAM BENEFITS

## INSTALLATION OPTIONS

### Trunking Mount

HI-BEAM features an innovative universal mounting bracket. This adapter allows the installer to use a range of bracket accessories applicable to the trunking or busbar used.

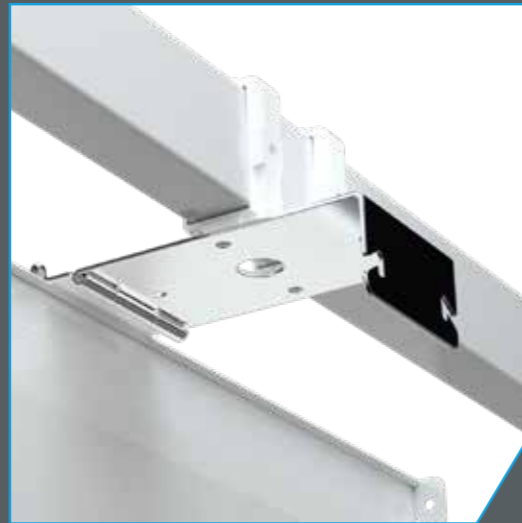
HI-BEAM can be used with trunking mounting accessories from many well-known trunking and busbar manufacturers.

Holophane recommends using 2 x trunking specific brackets per luminaire.

HI-BEAM'S universal bracket adapter features 4 x Ø6mm holes and a central Ø21mm.

Whilst this bracket suits most major trunking manufacturers; Holophane recommends ensuring compatibility with chosen trunking manufacturer before installation.

**Note:** 1 x universal bracket supplied with 630mm & 915mm versions. 2 x universal brackets supplied with 1200mm version.

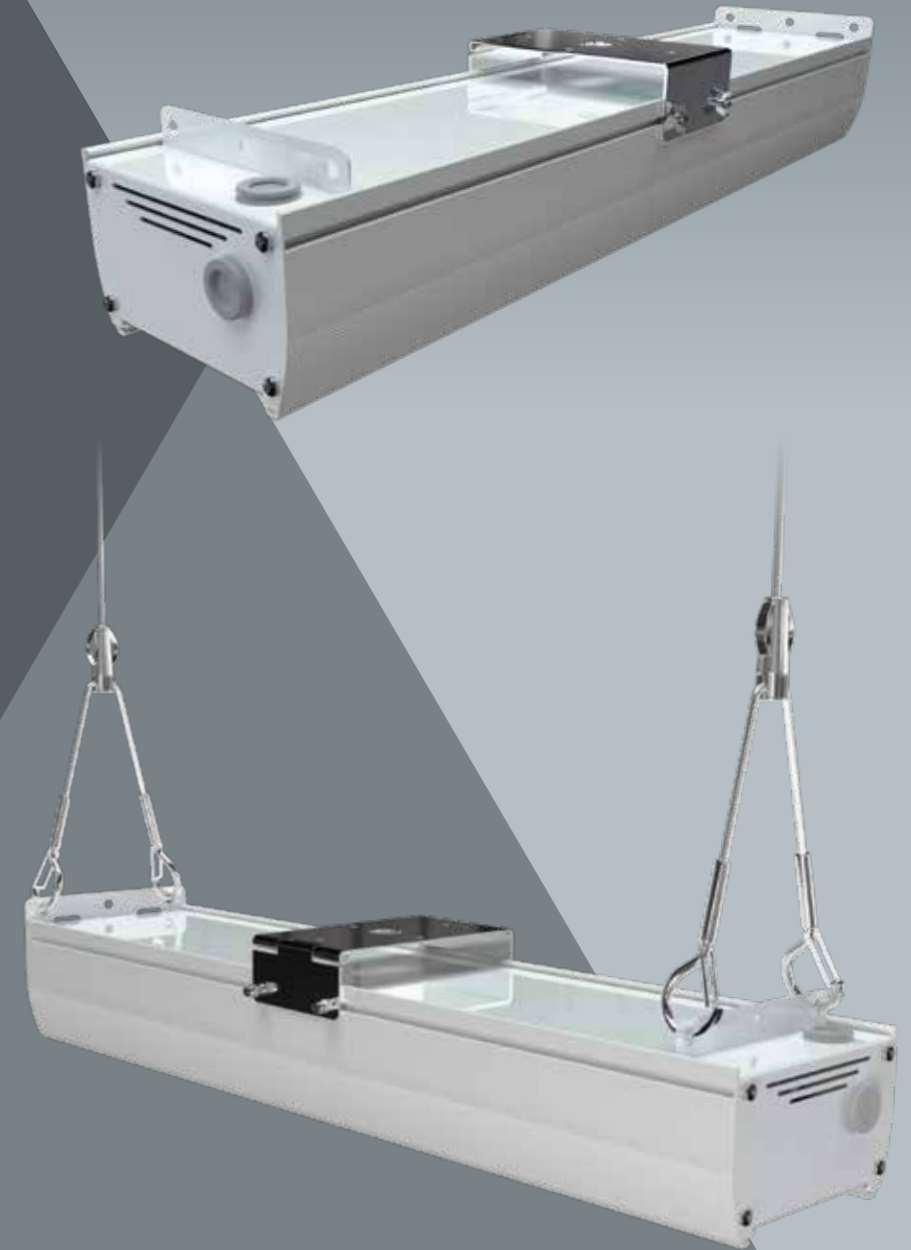


### Suspension Mount

As standard the HI-BEAM end-caps feature integrated suspension mounting points. There are 4 x suspension points across the luminaire.

This enables flexibility to the installer should the project call for suspension mounted luminaires.

Suspension kit is available from Holophane as an accessory (HIB. SUS). Suspension kit (1m) - includes 2 x suspension wire and fixing kit.

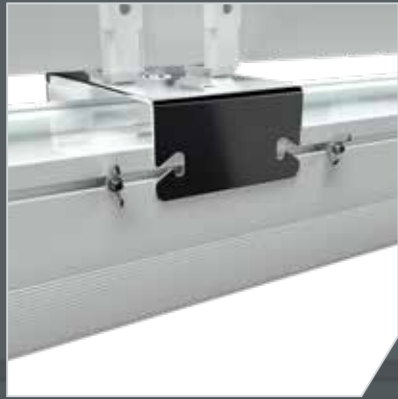


# INSTALLATION OPTIONS

## EASY MAINTENANCE

The HI-BEAM universal mounting bracket features an innovative tool-less operation that allows the luminaire to be orientated into a service position. Coupled with a snap-in plastic cover, HI-BEAM can be easily installed and maintained in-situ with minimal tools.

**1** Wing-nuts are loosened and moved away from the bracket.



**2** HI-Beam can be rotated into service position.



**3** The end caps feature a small aperture where a suitable tool can be used to release the snap-fit cover away from the luminaire.



**4** Plastic cover can be removed from the luminaire.



**5** Cable installation or maintenance such as battery changes can now be carried out.



**6** Once finished the plastic cover is easily snapped back into place.



**7** The luminaire can now be put back into its operational position with the wing-nuts placed back into the bracket and tightened.

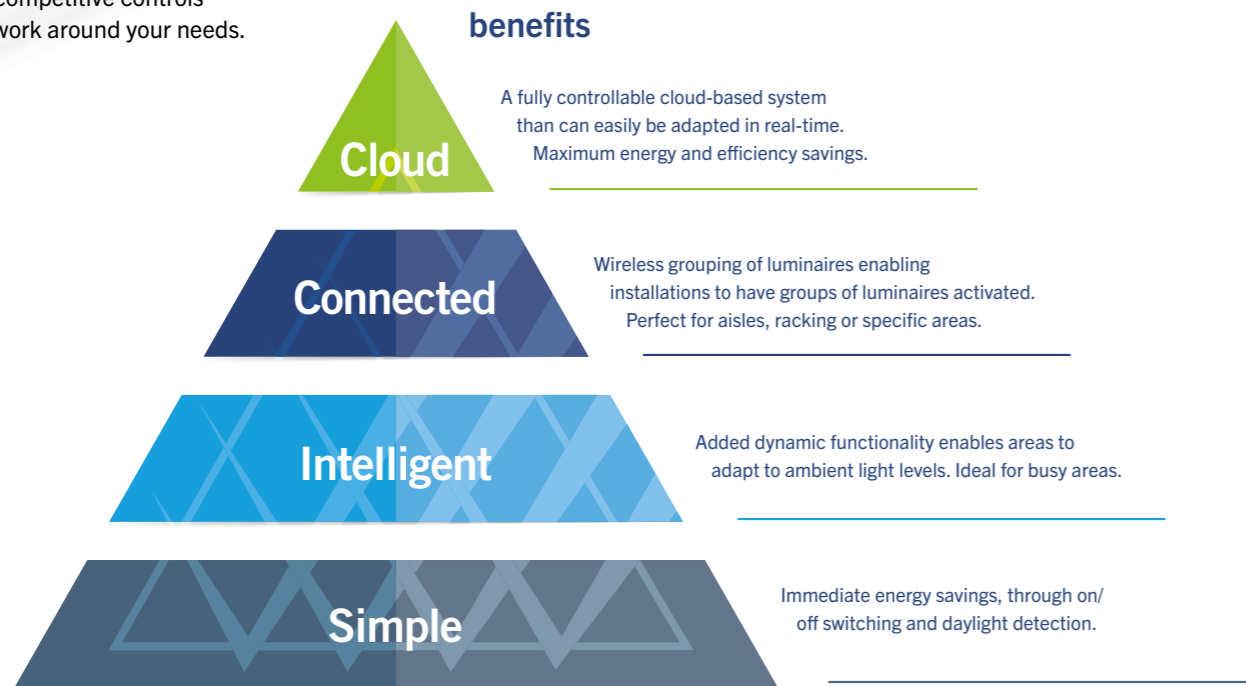


# EASY MAINTENANCE

# INTERIOR LIGHTING CONTROLS







## A solution that works for you.

The Holophane controls solution is tiered to offer you a solution to cater for every type of project. Ranging from basic on/off PIRs through to cloud-based controls, Holophane can offer a competitive controls solution to work around your needs.



# CONTROLS OPTIONS



	What is the functionality?	Mounting Height	Can it be programmed?	Can it be upgraded?
<b>Cloud HOLOSAir</b>  <p>We call this control solution HOLOSAir. Holophane's cloud-based system with added digital functionality and enhanced control of luminaires</p>	<ul style="list-style-type: none"> <li>On/off &amp; dynamic dimming</li> <li>Wireless grouping of multiple luminaires</li> <li>Daylight sensing</li> <li>Web based cloud control and analytics</li> <li>Emergency reporting</li> <li>Failure reporting</li> </ul>	Up to 15m*	Yes, Via the Holophane Commissioning service only <small>Note: Requires a HOLOSAir gateway for full functionality</small>	Yes – scalable, upgradeable
<b>Connected</b>  <p>All the same features as the intelligent PIR but with added luminaire grouping functionality</p>	<ul style="list-style-type: none"> <li>On/off &amp; dynamic dimming</li> <li>Wireless grouping of multiple luminaires</li> <li>Daylight sensing</li> </ul>	Up to 15m*	Yes, Via the Holophane Commissioning service only.	Yes – only the connected sensor can be upgraded to the cloud tier
<b>Intelligent</b>  <p>An intelligent PIR with added dynamic dimming</p>	<ul style="list-style-type: none"> <li>On/off &amp; dynamic dimming</li> <li>Daylight sensing</li> </ul>	Up to 15m*	Yes via remote IR programmer or via the Holophane Commissioning service 	No
<b>Simple</b>  <p>A simple on/off PIR with daylight sensing</p>	<ul style="list-style-type: none"> <li>On/off control</li> <li>Daylight sensing</li> </ul>	Up to 15m*	Yes via remote IR programmer or via the Holophane Commissioning service 	No

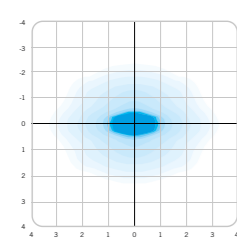
\*Dependant on solution specified

# SPECIFICATION

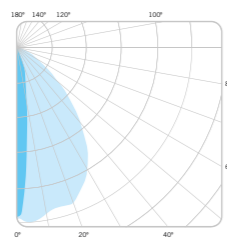
## Specification

Holophane HI-BEAM consists of a 6063-T6 Aluminium extruded body and steel end-caps finished in polyester power-coated Smooth White (RAL9016). The LED optical arrangement includes bespoke LED boards behind PMMA optics. The luminaire shall be sealed to IP20. Drivers and LEDs are mounted directly to the aluminium body to promote excellent thermal characteristics. Mounting of the luminaire is via a universal mounting bracket or via the integrated suspension mount points. The bracket includes a hinge to allow it to be put in a service position and features a snap-fit plastic cover to enable easy entry to gear and components. Cable entry is via either side or top membrane cable glands.

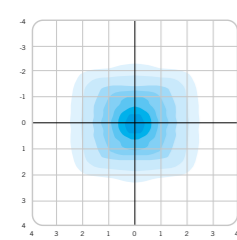
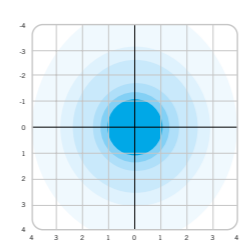
## Light Distributions



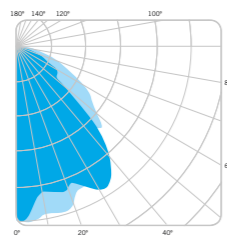
Tight Distribution (.TD)



Broad Distribution (.BD)



Open Distribution (.OD)



## Features and benefits

### Exceptional Performance

- Lumen packages from 20,000 - 40,000 lumens with efficacies of up to 165 lumens per Watt.
- Optimised aisle and racking optic providing class leading lux levels and uniformity.

### Easy Installation & Maintenance

- Flexible mounting bracket/accessories cater for a range of project requirements and make for easy installation of the luminaire.
- Tool-less entry enables easy installation and maintenance.

### Fully Controllable

- Integrated PIRs available to suit project needs and further reduce energy consumption.
- Integrated 3hr emergency DALI Self-test option.
- Compatible with HOLOS Air.

## Detailed specification

### Mechanical

Materials	Paint colour	IP Rating	IK Rating
Extruded aluminium (6063-T6)	Smooth white (RAL9016)	IP20	IK09
Mounting Type	Mounting height	Ambient operating temperature	
Trunking	5m - 20m	-10°C - +40°C	
Suspension			

### Light

Lumens	Power	Driver current	Efficacy
20,000 – 40,000lm	126-207W	825-865mA	165 Lm/W
Colour Temperature	CRI	Distributions	Lifetime Hours L90B50 @ 25°C
4000 K	80 CRI	Tight distribution	100,000hrs

### Electrical

Electrical Class	Surge protection	Emergency
Class I	8 Kv	3hr DALI Self-Test Emergency (c.600-650lms in emergency mode dependent on version)
Power Cable Entry	Factory Fitted Flying Lead Cores	
Top or Side entry via membrane gland	5-Core (std fitting) 5-Core (with DALI) 7-Core (with DALI+EM3)	

### Controls

Control Protocol	Control Options
DALI	PIR Holos Air



# SPECIFICATION



# ORDERING DETAILS

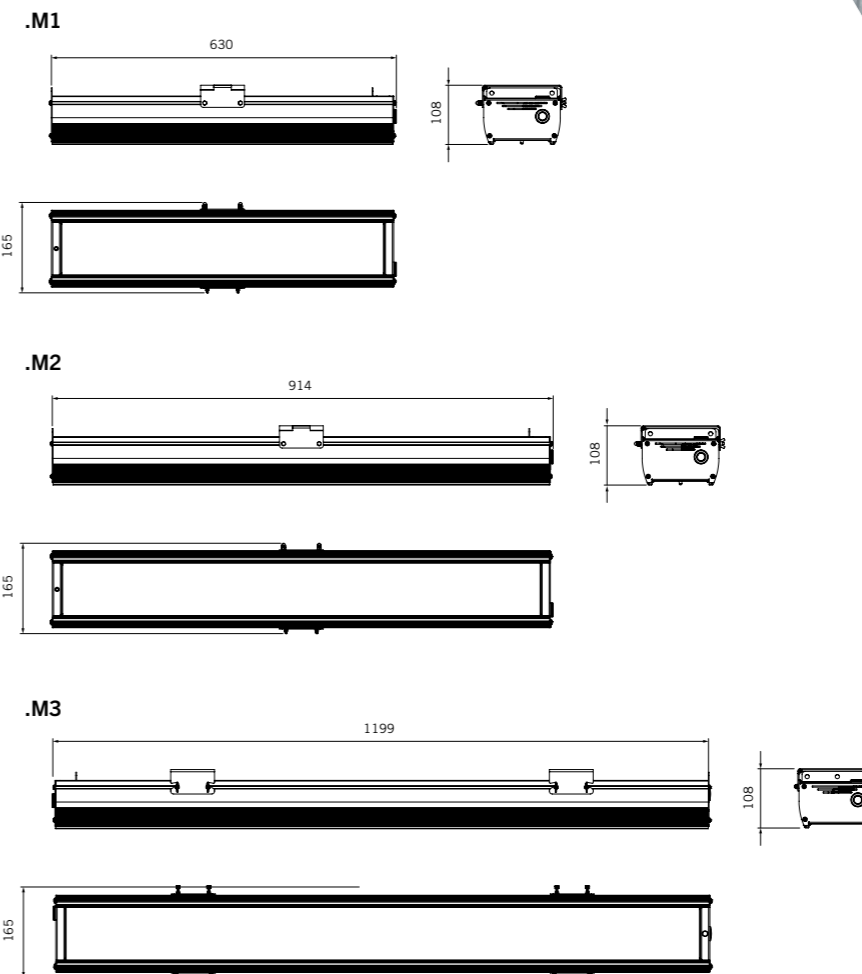
Code	<b>Luminaire (required)</b>										
HIB	HL_BEAM										
Code	<b>Series (required)</b>										
.1	Series 1										
Code	<b>Lamp Type (required)</b>										
.LM2048	LED light engine producing c.20,000 lm with a nominal 4000K colour temperature										
.LM2548	LED light engine producing c.25,000 lm with a nominal 4000K colour temperature										
.LM3048	LED light engine producing c.30,000 lm with a nominal 4000K colour temperature										
.LM3548	LED light engine producing c.35,000 lm with a nominal 4000K colour temperature										
.LM4048	LED light engine producing c.40,000 lm with a nominal 4000K colour temperature										
Code	<b>Operating Package (required)</b>										
.M1	Small (630mm nominal length)*										
.M2	Medium (915mm nominal length)**										
.M3	Large (1200mm nominal length)*										
Code	<b>Distribution (required)</b>										
.TD	Tight distribution										
.BD	Broad distribution										
.OD	Open distribution										
Code	<b>Fixing Method (required)</b>										
.TK	Universal Trunking mount adaptor and suspension holes										
Code	<b>Colour (required)</b>										
.C1	Smooth White (RAL9016)										
Code	<b>Cable Entry (option)</b>										
.FL1	1m flying lead (number of cores dependant on luminaire configuration)										
Code	<b>Dimming Outputs (option)</b>										
.LRD	DALI										
Code	<b>Controls (option)</b>										
.PH0	Integrated PIR, suitable up to 15m, with switching-only functionality. Switches off after 20 minutes of inactivity. Remotely re-programmable with accessory HEL.PRG (purchased separately).										
.PH1	Integrated PIR, suitable up to 15m. Dims to 30% after 10 minutes of inactivity - switches off after further 10 minutes. Remotely re-programmable with accessory HEL.PRG (purchased separately).										
.WIH	Integrated HOLOSAir wireless node, supports grouping, suitable up to 15m - includes PIR & photocell (Requires SER.COM.DAY or SER.COM.NIGHT commissioning)										
.PL0	Integrated PIR, suitable up to 9m. Switches off after 10 minutes of inactivity. Remotely re-programmable with accessory HEL.PRG (purchased separately)										
.PL1	Integrated PIR, suitable up to 9m. Dims to 30% after 10 minutes of inactivity - switches off after further 10 minutes. Remotely re-programmable with accessory HEL.PRG (purchased separately)										
.WIL	Integrated wireless node, supports grouping, suitable up to 6m - includes PIR (Requires SER.COM.DAY or SER.COM.NIGHT commissioning)										
Code	<b>Emergency (option)</b>										
.EM3	3-Hr integral self-test DALI maintained emergency*										
Code	<b>Lens (option)</b>										
.CFL	Clear flat lens										
.FFL	Frosted Flat Lens										
HIB	.1	.LM2048	.M1	.TD	.TK	.C1	.FL1	.LRD	.PH0	.EM3	.CFL



# DIMENSIONS & PERFORMANCE



dimensions in mm



\*LM2048 & LM2548 only. \*\*LM3048 only. \*LM3548 & LM4048 only. \*LM2548+.EM3 only available in .M2 size.

## accessories

Code	
HIB.SUS	Suspension kit (1m) - includes 2 x suspension wire and fixing kit.
HEL.PRG	Remote programming device. Suitable for luminaires with options PH0/PL1/PH1 PIR devices. Programming range up to 20m.

## Contractor Select

Below are the configurations available on shorter lead times from Holophane:

- HIB.1.LM2048.M1.TD.TK.C1.FL1.LRD
- HIB.1.LM2548.M1.TD.TK.C1.FL1.LRD

**Note:** The specifications of the Holophane luminaire, all descriptions, illustrations, drawings and specifications in the Holophane catalogue and website represent only general particulars of the goods to which they apply and shall not form part of any contract. The company reserves the right to change specifications at its discretion without prior notification or public announcement.

## Typical luminaire performance

Configuration	Delivered Lumens	Circuit Power (W)	Driver Output Current (mA)	Luminaire Efficacy (lpw)	Weight kg	
HIB.1.LA2048	c.20,000	126	745	159	Std	w/Emergency
HIB.1.LA2548	c.25,000	156	910	153	HIB M1	3.7 4.2
HIB.1.LA3048	c.30,000	205	860	147	HIB M2	5.0 5.5
HIB.1.LA3548	c.35,000	213	1280	165	HIB M3	6.3 6.8
HIB.1.LA4048	c.40,000	251	1490	160		

Lumen data is considered to be representative of the configuration shown, and may vary, with a tolerance on flux of +/- 7% (typical of LED manufacturers data) and luminaire power of +/- 5%.

## INTERIOR FAMILY

### PRISMPACK™



Up to 120,000 lm



Up to 150 lm/W luminaire



**Colour Temperature**  
4000K - 80CRI  
5000K - 80CRI  
6500K - 80CRI



7.1kg - 39.8kg\*  
\* Dependant on lumen version



**Ta**  
-20°C to +70°C\*\*  
\*\* Up to 70°C with High Ambient Version. Max output of 60,000lm



100,000 hours at 45°C  
50,000 hours at 70°C  
L70B50



### PRISMASPACE™



Up to 40,000 lm



Up to 179 lm/W luminaire



**Colour Temperature**  
4000K - 80CRI



Up to 4.6kg\* including gear  
\* Dependant on lumen version



**Ta**  
-20°C to +55°C  
\* Ta of +25°C for Emergency versions



140,000 hour life  
L70B50



### HALOPRISM™



Up to 60,000 lm



Up to 156 lm/W luminaire



**Colour Temperature**  
4000 K - 80 CRI



17-19 kg\* including gear  
\* Dependant on lumen version



**Ta**  
Up to +55°C



140,000 hour life  
L70B50



## AN ENVIABLE REPUTATION THROUGHOUT THE WORLD

125 years of  Innovation & Excellence

When Holophane was founded in 1896 in London, headed by Pelham Trotter, it marked the start of an incredible history that has now seen Holophane become a global business revered throughout the world for its expertise, quality, innovation and excellence in lighting.

Holophane's first product was the famous patented globe in 'white' or 'rose crystal' that sold for around 2 shilling (10p). Today, Holophane continues this proud tradition with our values deeply rooted in the dedication to creating luminaires, with exceptional lighting performance, innovative patented technologies, and delivering added customer value beyond illumination.

### What does it mean for our customers?

#### A Trusted & Reliable UK Manufacturer

From Royalty all the way to small residential projects, Holophane has been a trusted manufacturer over the decades for all manner of projects. You can be sure you are in good hands and can rely on the collective knowledge and expertise we have gathered since our inception in 1896.

#### Development of Innovative Products

As part of our design philosophy, Holophane are always trying to push boundaries in the development of unique product innovations. As such many of our luminaires hold UK and International design patents.



#### Products That Deliver Added Value

In today's world, sustainability and added value are becoming increasingly important. As such our products and solutions go further than just lighting. Many of our innovations include integrated smart connected solutions to help customers achieve further energy savings and can also enable remote monitoring.

#### Delivering excellent customer service

Over our 125-year history we have always been committed to delivering the best service to our customers and supporting in a myriad of ways to ensure the best possible outcomes. This goes as far as offering a free lighting design service to one-off products/solutions to meet customers unique needs.



# HI BEAM



Holophane Europe Limited  
Bond Avenue, Bletchley, Milton Keynes MK1 1JG United Kingdom  
Telephone: +44 (0)1908 649292  
E-mail: [info@holophane.co.uk](mailto:info@holophane.co.uk)  
[www.holophane.co.uk](http://www.holophane.co.uk)

