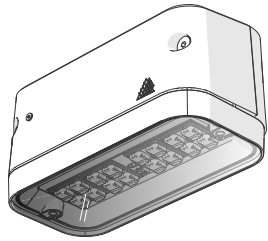
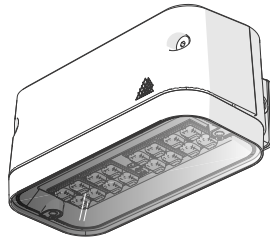


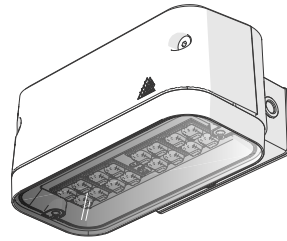
# DENVER ID WALL



STANDARD

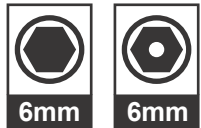


.B



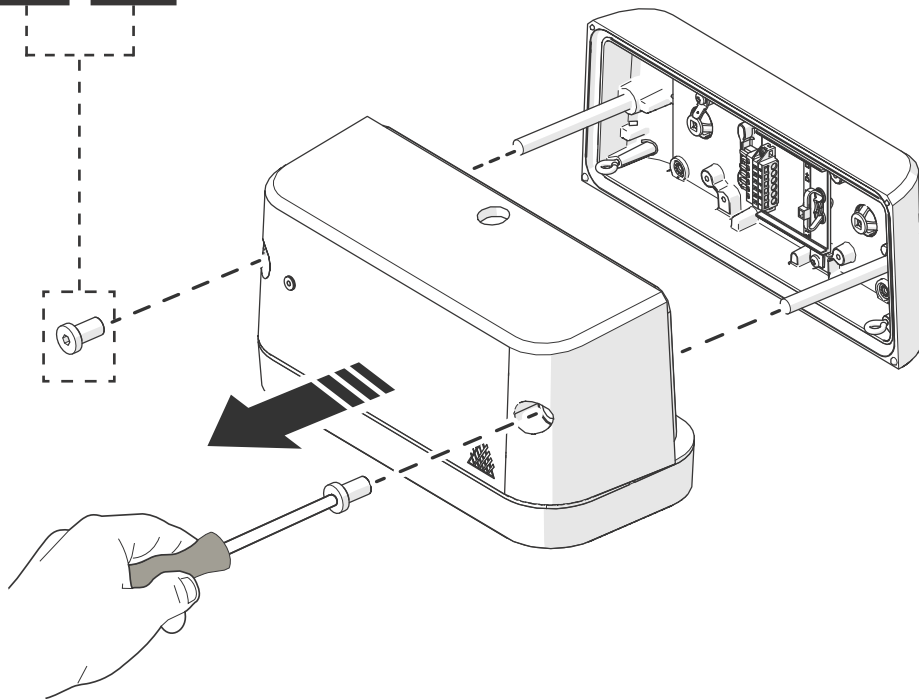
.PIR.B

## 1 Preparation for Mounting / Vorbereitung für die Installation / voorbereiding voor installatie / förberedelse för installation / préparation pour l'installation / forberedelse for installasjon

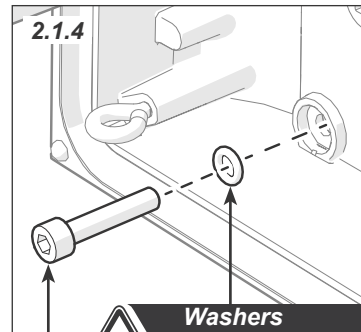
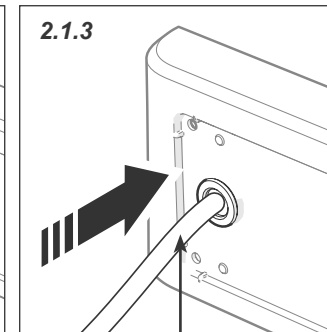
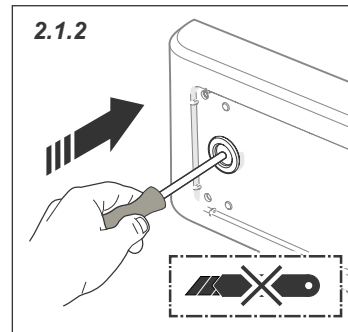
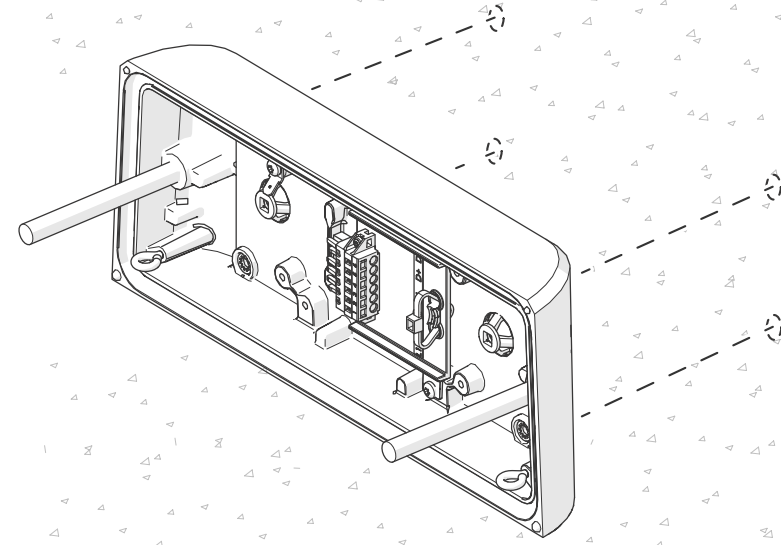
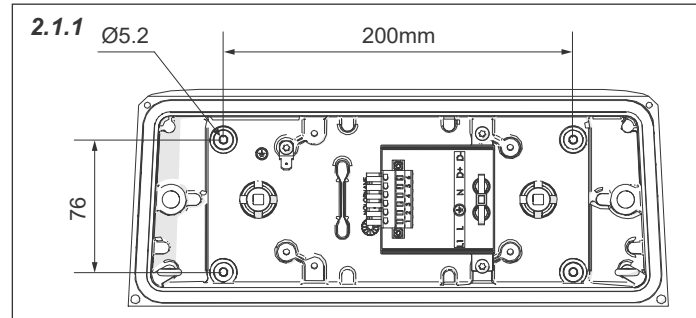


.V1

Optional / Wahlweise /  
 Facultatief / Valfri /  
 Optionnel / Valgfri



## 2 STANDARD Fixing method / Befestigungssystem / Bevestigingsmethode / Fixeringsmethode / Systèmede fixation / Festemethode



Cable (Ø6-13mm)  
 Kabel / Câble

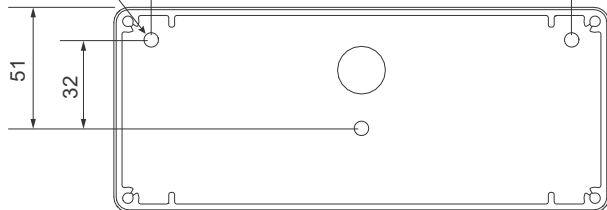
**Washers**  
 Included / Inbegriffen /  
 Inbegrepen / Ingår / Include /  
 Inkludert

Fasteners supplied by others / Gelifert von anderen  
 / Verstreckt door anderen / Tillhandhålls av andra /  
 Fourni par d'autres / Levert av andre.

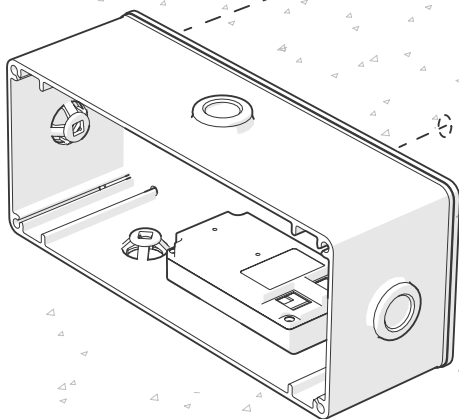
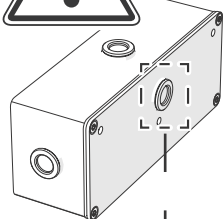
## 2 .B/ .PIR.B

Fixing method / Befestigungssystem / Bevestigingsmethode / Fixeringsmethod / Systèmede fixation / Festemetode

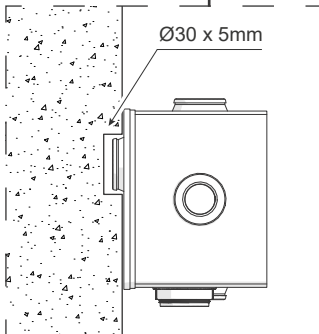
2.2.1 Ø6.2 180mm



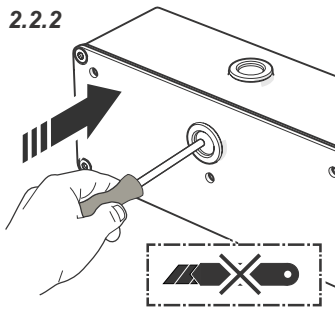
Maintain IP Seal / Maintenir le sceau IP / IP-Siegel beibehalten / Behoud IP-keurmerk / Oppretthold IP-forseglingen / Behåll IP-sigillet



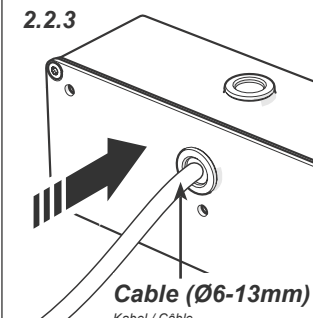
Ø30 x 5mm



2.2.2

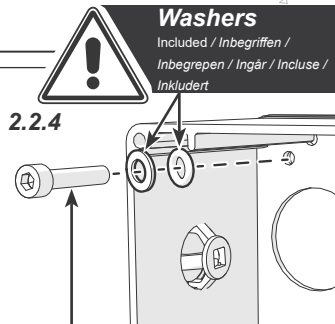


2.2.3



Cable (Ø6-13mm)  
Kabel / Câble

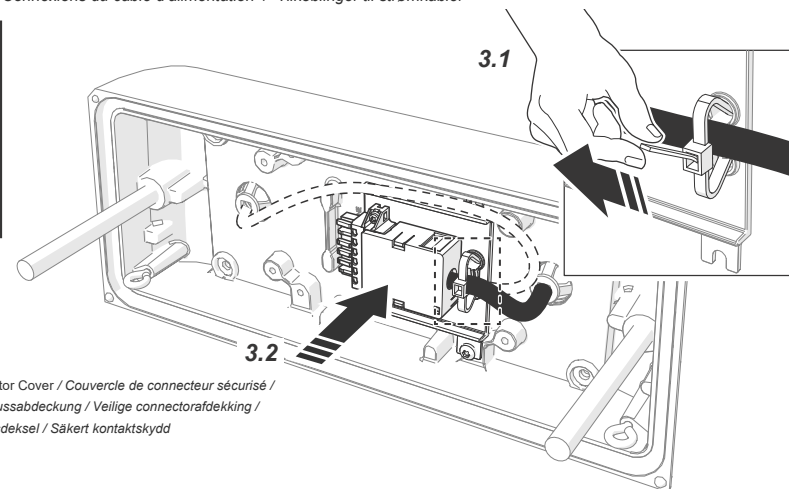
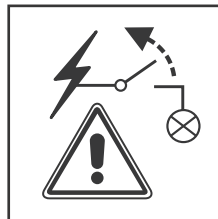
2.2.4



Fasteners supplied by others / Gelifert von anderen / Verstreckt door anderen / Tillhandhålls av andra / Fourni par d'autres / Levert av andre.

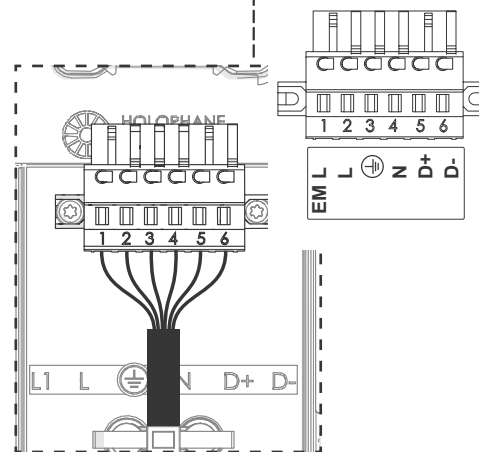
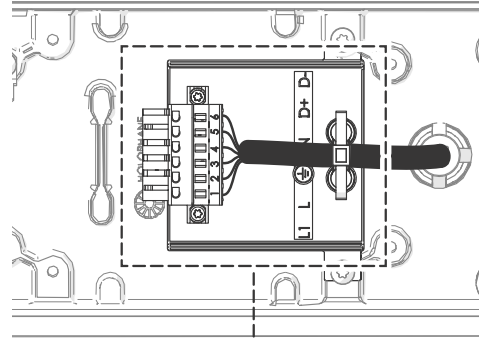
## 3 STANDARD

Mains Flying Lead Connection / Netzkabelverkabelung / Voedingskabel bedrading / Strömkabelanslutningar / Connexions du câble d'alimentation / Tilkoblinger til strømkabler

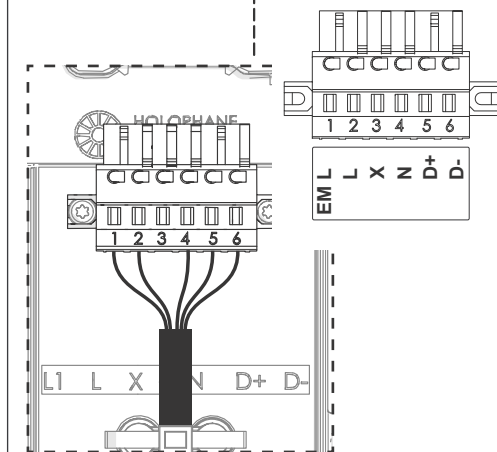
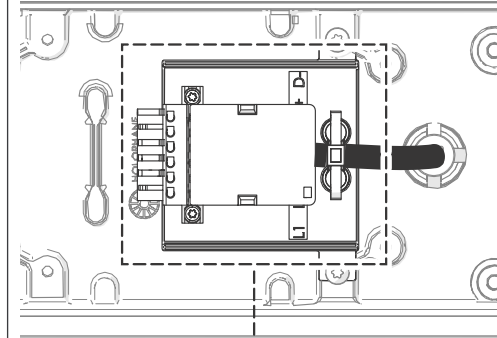


Secure Connector Cover / Couverture de connecteur sécurisé / Sichere Anschlussabdeckung / Veilige connectorafdekking / Sikker koblingsdæksel / Sikkert kontaktskydd

.CI

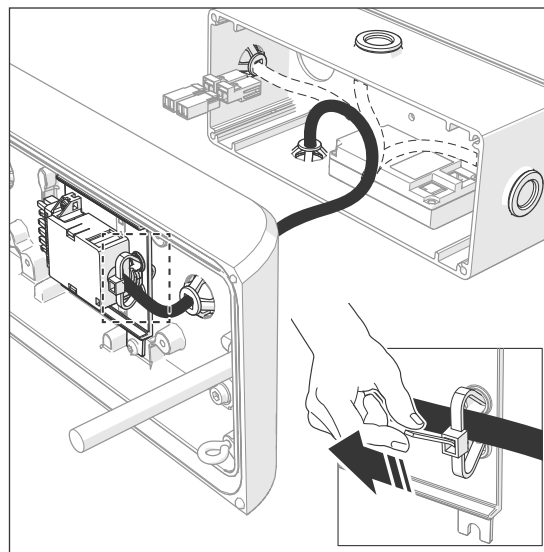
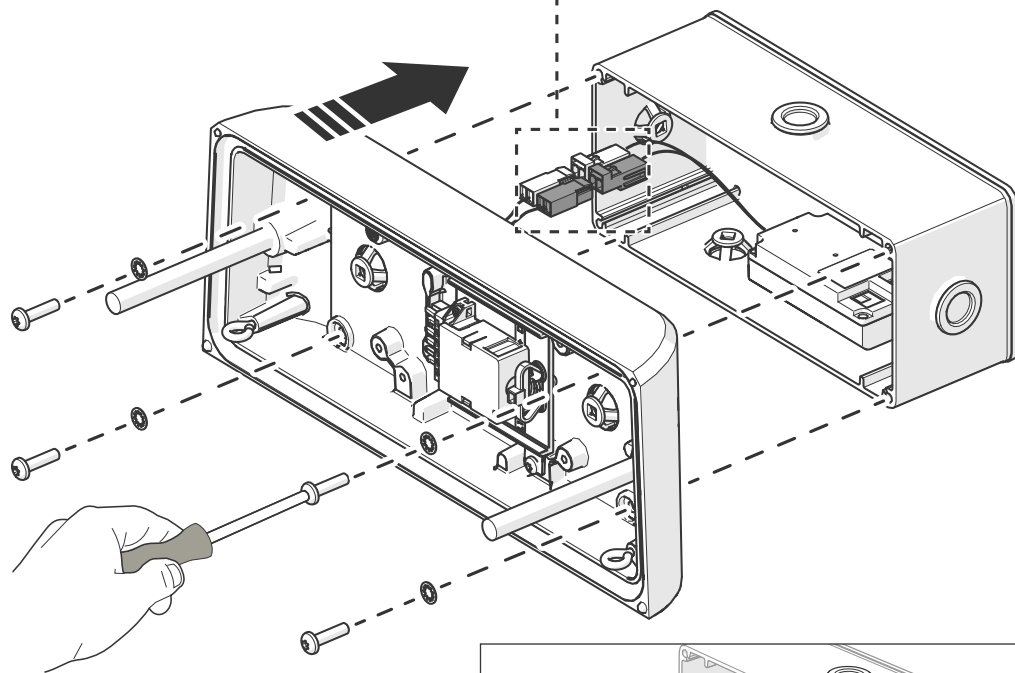
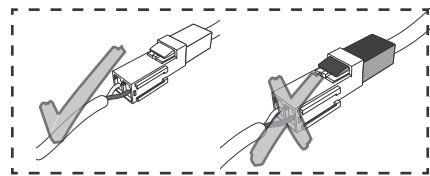
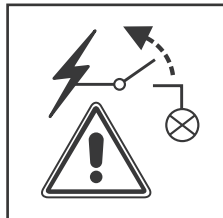


.CII



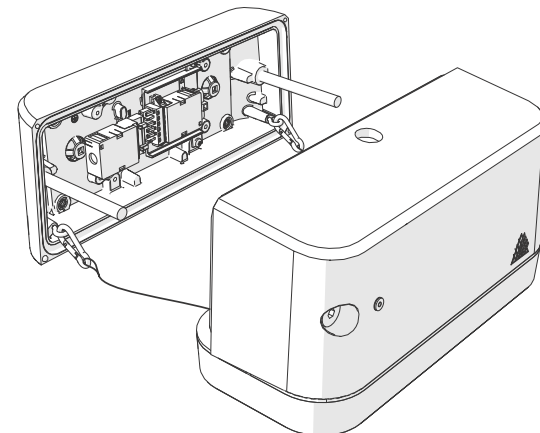
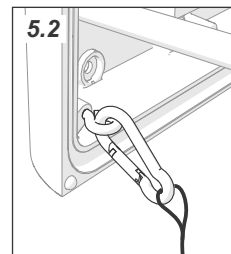
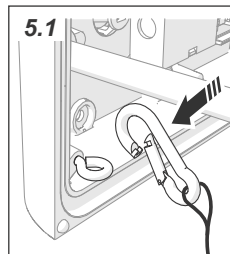
#### 4 .B/ .PIR.B

Mains Flying Lead Connection / Netzkabelverkabelung / Voedingskabel bedrading / Strömkabelanslutningar / Connexions du câble d'alimentation / Tilkoblinger til strömkabler

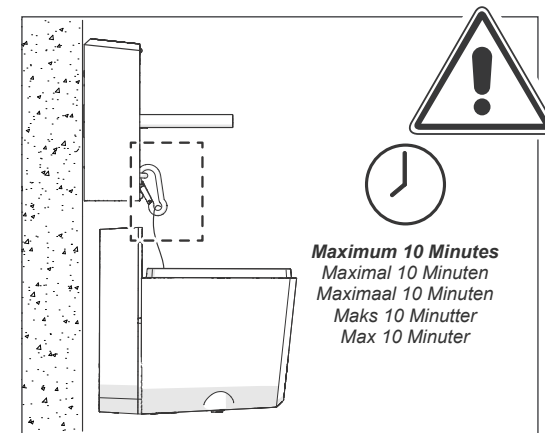
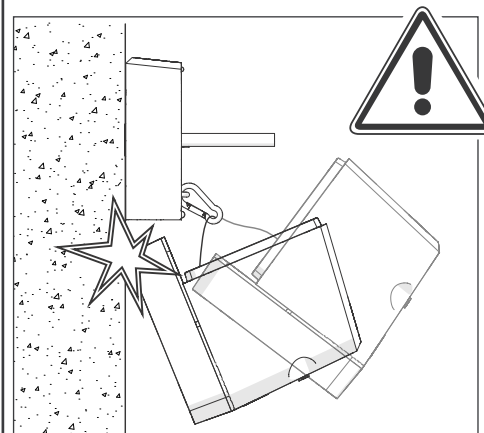


#### 5

Retention Straps / Sicherheitskette / retentieketen / retentionskedja / chaîne de rétention / oppbevaringskjede

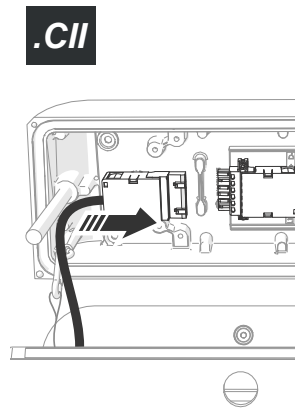
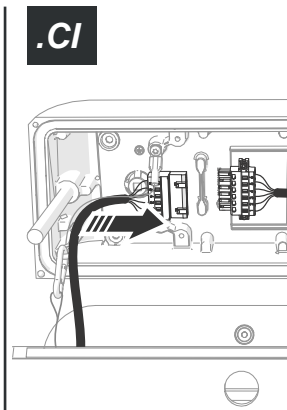
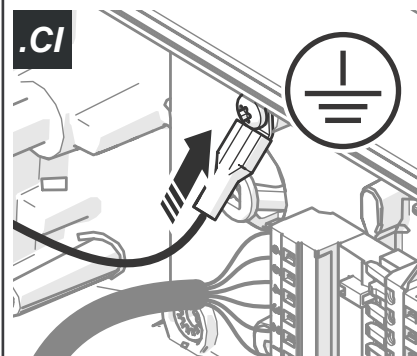


#### 6

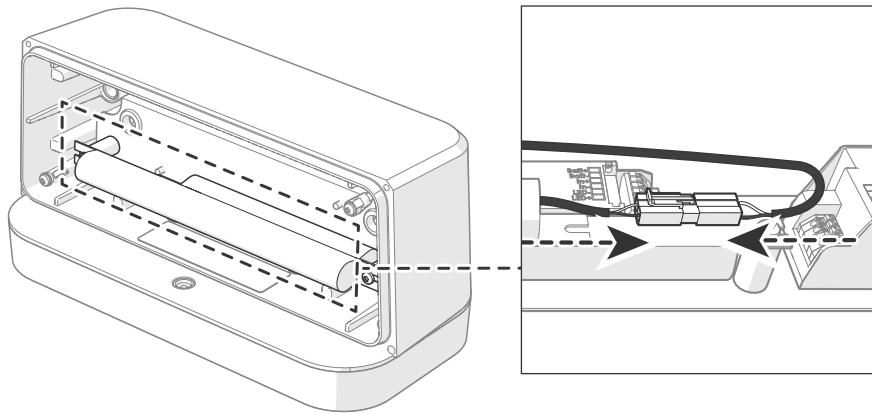


Maximum 10 Minutes  
Maximal 10 Minuten  
Maximaal 10 Minuten  
Maks 10 Minutter  
Max 10 Minuter

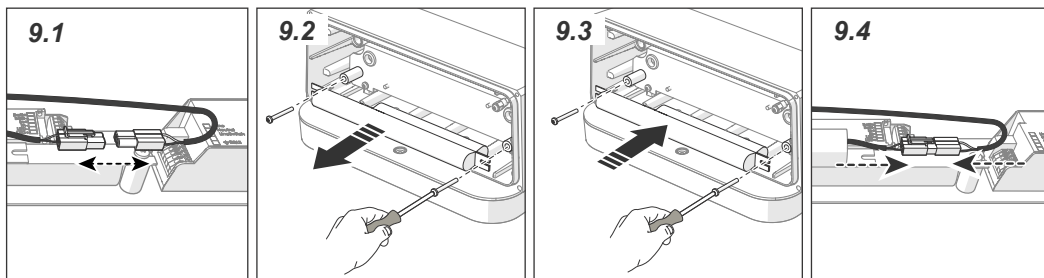
#### 7



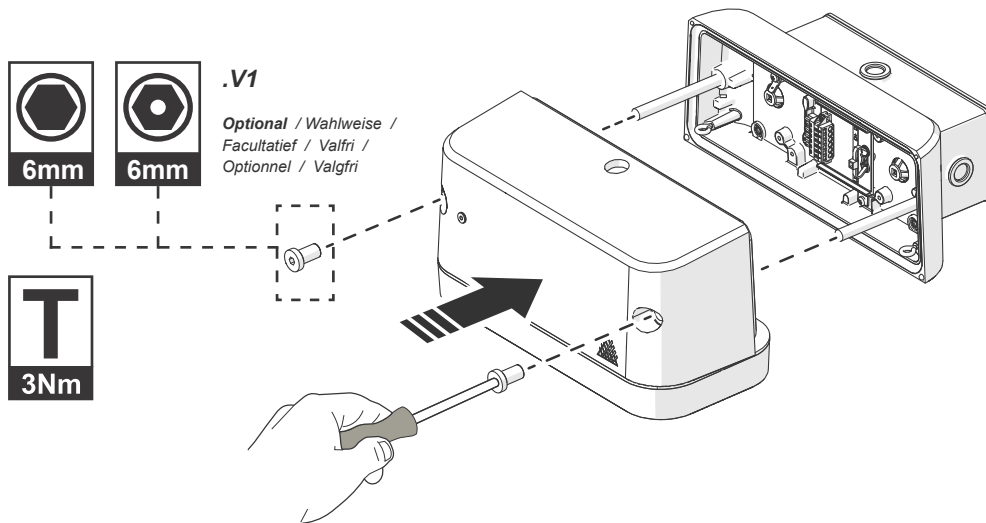
**8 Emergency Battery - New Install / Batterie de secours – Nouvelle installation / Notbatterie - Neuinstallation / Noodaccu - Nieuwe installatie / Nødbatteri - Ny installasjon / Nødbatteri - Nyinstallation**



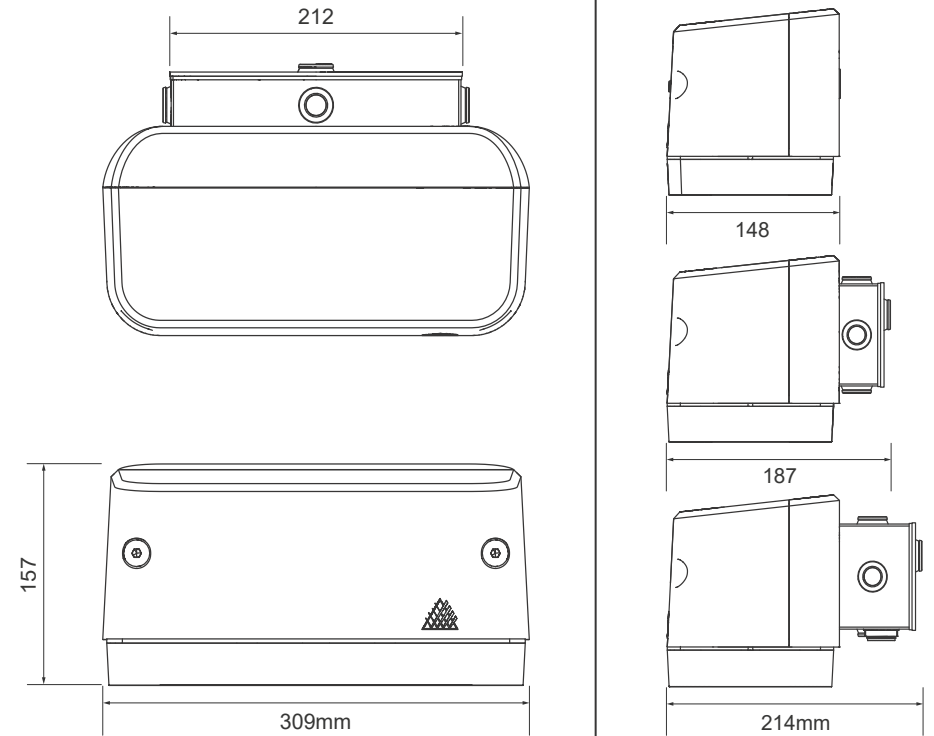
**9 Emergency Battery - Replacement / Batterie de secours – Remplacement / Notbatterie - Ersatz / Noodaccu - Vervanging / Nødbatteri - Utskifting / Nødbatteri - Byte**



**10 .B / .PIR.B Reassembly / Montage / Hermonter / återmontering / remontage / Remontering**

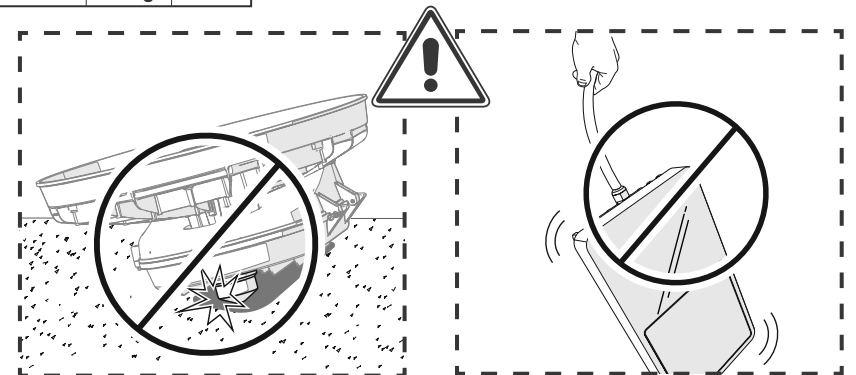


**DIMENSIONS / MÅBE / AFMETINGEN / MÅTNINGAR / DES MESURES / DIMENSJONER**



	Kg	IK 10
.STANDARD	6.5Kg	IK 10
.B	7.1Kg	IK 10
.B / .PIR.B	7.3Kg	IK 10

Gear Compartment	Controls/ Photocells	Light Engines
IP65	IP65	IP66



**HOLOPHANE**  
An AcuityBrands Company

Holophane Europe Limited  
www.holophane.co.uk info@holophane.co.uk

