



**HOLOPHANE®**

**AcuityBrands.**  
Expanding the boundaries of lighting™



**D-SERIES**



**D-Series Parking Garage**





**D-SERIES**



Energy efficiency, high quality lighting and controllability are all combined in the D-Series LED Parking Garage. The D-Series Parking Garage features advanced LED optics specifically designed for applications such as parking decks with low mounting heights to provide light distribution and effective security light levels.

With a design that aims to run cool for a longer life, the D-Series Parking Garage LED module life can be up to 100,000 + hours maintenance free exceptional performance.

**optics / light source**

- > Five lumen packages available (6000, 7000 & 8000)
- > Fully soak tested light engines ensuring LED reliability and eliminating infant mortality failures
- > 4000°K colour temperature, 70 CRI
- > Four dedicated parking garage optics

**approvals**

Complies with EN60598  
**IP** IP65 optic and luminaire  
**Ta** Rated for -20°C to 40°C  
**CE**

For further information please visit the Holophane website [www.holophane.co.uk](http://www.holophane.co.uk)



Energy Efficient  
 Fully Controllable  
 Advanced Optics

**Typical Luminaire Performance**

Configuration	Delivered Lumens <sup>†</sup>	Power Consumption	Drive Current	Rated Life of LED Module (L70B50 @Tq 20°C)*
DPG.LA064	5678	46W	700mA	100,000 + hrs
DPG.LA074	6637	53W	525mA	100,000 + hrs
DPG.LA084	8366	67W	700mA	100,000 + hrs

**Note:** Data is correct at time of print.  
 \* For other life metric data in line with IEC PAS62722-2-1 and 62717 contact your Holophane Representative for details  
 † Based on the average of all the optical distribution options



**specification**

Two piece die-cast aluminium housing, that conforms to EN1706 AC-46500, with integral heat sink fins to optimise thermal management through conductive and convective cooling. The LED drivers are mounted in direct contact with the casting to promote low operating temperature and long life.

Precision moulded acrylic lenses integrated onto an LED board that is IP65 and modular in design allowing for future light engine upgrades. Luminaire housing is completely sealed against moisture and environmental contaminants (IP65). Installation is via the mounting bracket that accommodates a variety of bezel box variants.

**features and benefits**

**Energy Efficient**

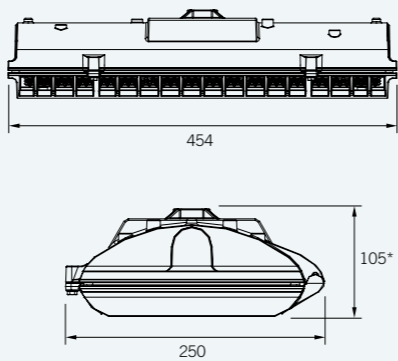
- > DSX LED Parking Garage luminaire is engineered to maximise heat dissipation. The luminaires high-performance LEDs are mounted to a metal core board and attached to a die cast aluminium heat sink for effective conductive cooling.
- > Light engine(s) consist of 20 or 30 high-efficacy LEDs that utilise conductive cooling to promote a LED module life that can be up to 100,000 + hrs at 20°C.

**Exceptional Performance**

- > Delivering a three year payback when compared to equivalent fluorescent luminaires and extending maintenance intervals.
- > Three precision-engineered optics created specifically for the parking garage application that deliver light exactly where it is needed.

**Complete Light Package**

- > Integrated three hours emergency option available.
- > Integrated presence detector option available to dim the luminaire when area is unoccupied.
- > Suitable for typical European ceiling heights and wiring methods.



\* Height excludes surface mount bracket (.SM)  
Add 34mm for .SM option.

**weight**

DPG	7.0kg
-----	-------

PIR attached version



**light distribution**

Featuring three precision-engineered optics created specifically for the parking garage application, the D-Series LED Parking Garage luminaire is designed to deliver light exactly where it's needed. These specialized optics meet the required lighting criteria for horizontal and vertical illumination as well as uniformity. The luminaire also controls unwanted glare to create a safe, visually comfortable experience for pedestrians and drivers.

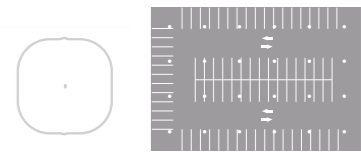
**SQN - Square Narrow**

The square narrow distribution is created specifically for entrances/exits. This distribution is concentrated, providing high levels of illumination without a centre hot spot.



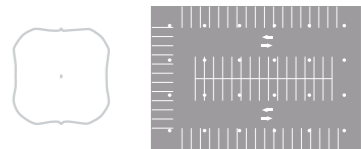
**SQM - Square Medium**

The square medium is specially designed for twin-row applications when higher levels of illumination are desired. The square medium distribution offers drivers and pedestrians a comfortable and consistent visual experience from any distance.



**SQW - Square Wide**

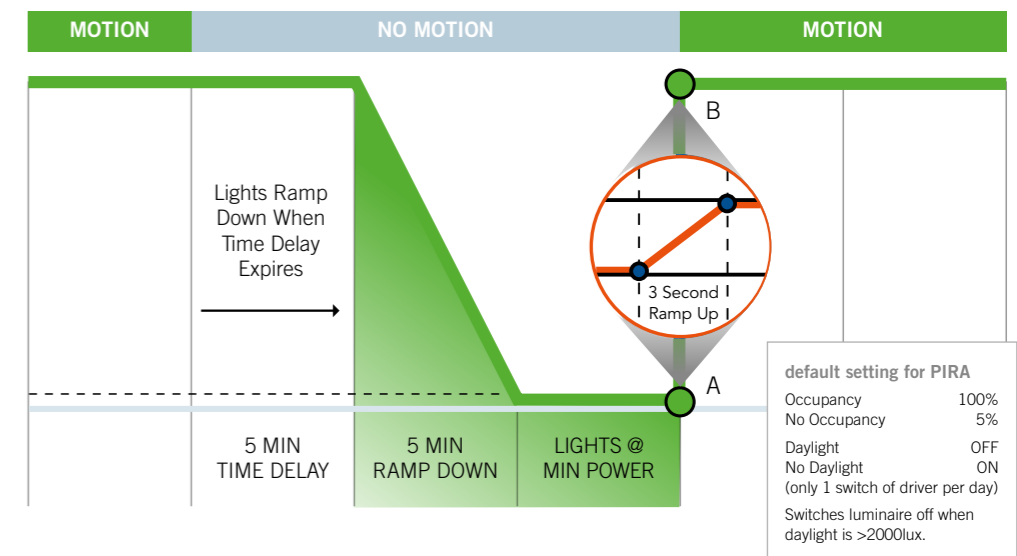
Also designed for twin-row applications, the square wide is ideal when higher vertical illumination is required.



**fully controllable**

When equipped with optional controls, the D-Series LED Parking Garage luminaire can provide additional energy savings. The luminaire's integrated sensors are designed to detect motion at an ideal fixture spacing of 9 metres resulting in fixtures spacings of up to 18 metres.

These fully programmable sensors dim the luminaire to pre-set illumination levels when motion is no longer detected and will return the luminaire to full illumination, without distracting flash, within three seconds of sensing movement. Each sensor also detects ambient light, so perimeter fixtures can be dimmed to minimum when sufficient daylight enters the structure.



ordering details - luminaire

performance

An innovative design and best-in-class LEDs make the D-Series LED Parking Garage luminaire energy efficient and enables it to deliver paybacks that meet your expectations.

The D-Series LED Parking Garage luminaire with its ingenious thermal management system creates a passive cooling process which keeps internal components running at peak efficiency.

Typical Design Parameters

> For a typical covered car park the target is to achieve 75 lux at 0.4 uniformity for the general area. The entrances / exits require 300 lux at 0.4 uniformity. A typical multi-storey car park has a ceiling height of between 2.6m and 3m.

D-Series Parking Garage vs Typical Fluorescent luminaires.

	D-Series Parking Garage LED	Typical Compact Fluorescent
Luminaires	117	117
Power Consumption Per Luminaire	51W	115W
Total Installation Load	6kW	13.5kW
Energy Cost	£0.72	£1.61
Cost Per Year	£4,704	£10,608

Running 18hrs per day with an electricity cost of £0.12 per kw/h

mounting arrangement

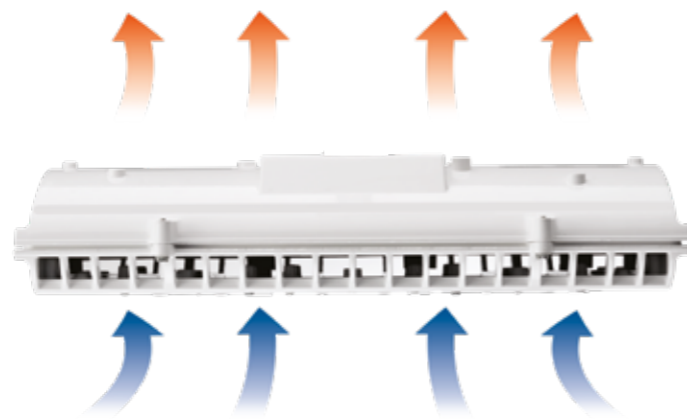


surface mount (.SM)



flush mount (.FM)

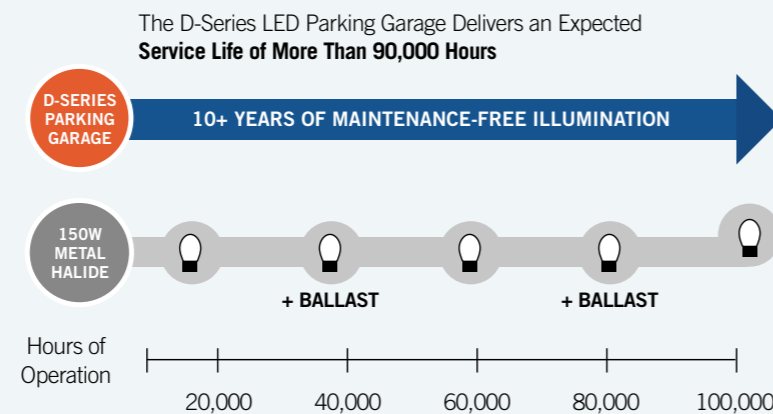
With two mounting arrangement that cater for surface mounting in conjunction with standard four way conduit BESA box or flush mounting direct to ceiling



Thermal Management

> The D-Series LED Parking Garage luminaire is engineered to maximise heat dissipation. The luminaire's high performance LEDs are mounted to a metal core board and attached to a die-cast aluminium heat sink for efficient conductive cooling.

The housing's revolutionary flow-through design also promotes convection cooling by channelling air along the underside of the luminaire's heat sink. This approach helps keep key components cool, which extends the life of the luminaire and enhances the performance of the LEDs.



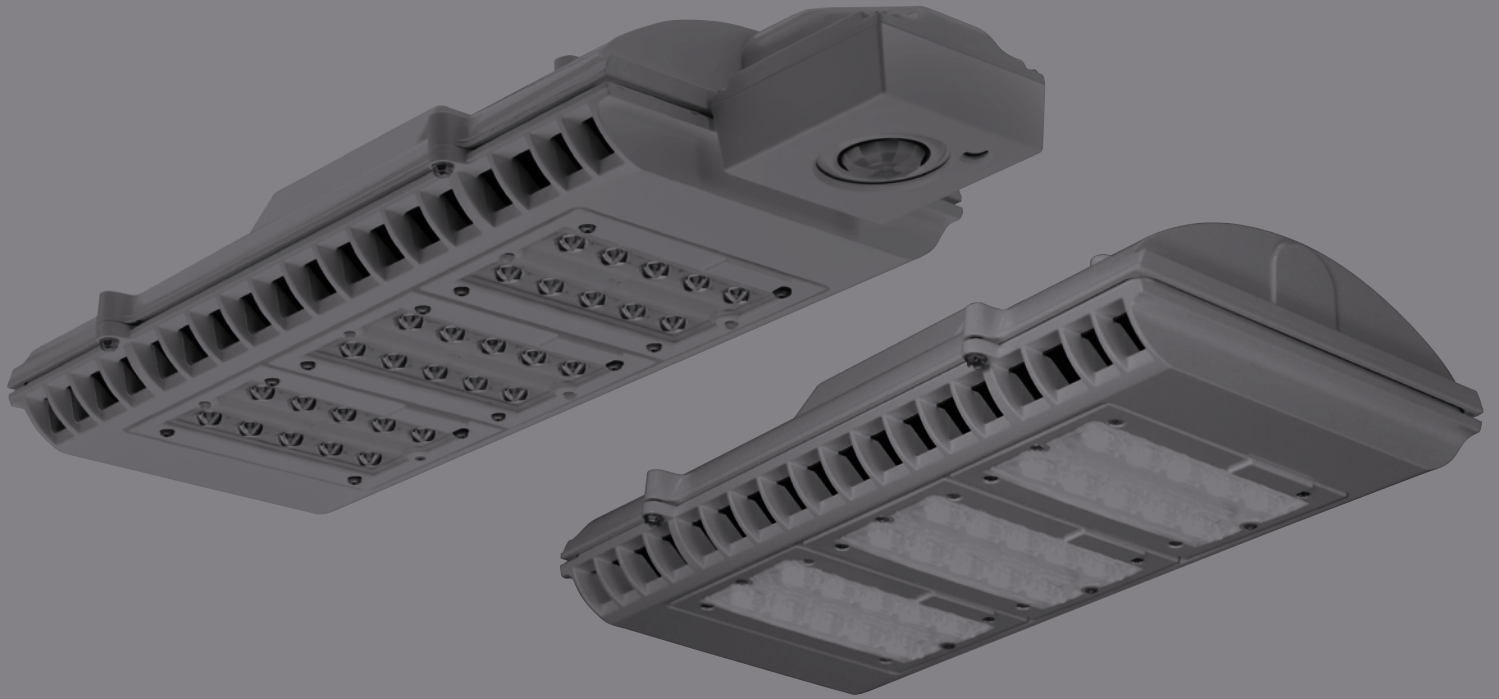
Code

DPG	DSX Parking Garage luminaire	
<b>Code</b>	<b>Lamp Type</b> (required)	
.LA064	LED light engine producing c 6,000 lm with a nominal 4000°K colour temperature	
.LA074	LED light engine producing c 7,000 lm with a nominal 4000°K colour temperature	
.LA084	LED light engine producing c 8,000 lm with a nominal 4000°K colour temperature	
<b>Code</b>	<b>Light Distribution</b> (required)	
.SQW	Square wide	
.SQM	Square medium	
.SQN	Square narrow	
<b>Code</b>	<b>Fixing Method</b> (required)	
.SM	Surface mounting in conjunction with standard BESA box conduit (20mm or 25mm)	
.FM	Flush mount	
<b>Code</b>	<b>Colour</b> (required)	
.C1	Smooth White RAL9016	
.C4	Graphite RAL7011	
.C6	Smooth Grey RAL7035	
.C7	Black RAL9005	
.C9	Metallic Silver RAL9006	
.RAL****	RAL Colour (customer choice)**	
<b>Code</b>	<b>Optional Control Gear</b>	
.D2	DALI HF electronic control gear	
.ANF	1-10V analogue fast dimming	
<b>Code</b>	<b>Optional Paint Finish</b>	
.C	Enhanced Paint finish	
<b>Code</b>	<b>Optional Photocell</b>	
.PIRA*	Integrated presence detector (up to 20m radius)	
<b>Code</b>	<b>Optional Emergency</b>	
.ME	with self contained 3hr maintained emergency battery and inverter	
<b>Example</b>	DPG	.L054 .SQM .SM .C1 .ANF .C .PIRA .ME

Note: .ANF & .D2 cannot be used in conjunction with .PIRA

\*Daylight and presence detector. As default the option is set to switch luminaire off when daylight is >2000lux and dims to 10% when no occupancy after 5 minutes. Default settings can be adjusted on site - please contact Holophane for further details.

Lumen data is considered to be representative of the configuration shown, and may vary, with a tolerance on flux of +/- 7% (typical of LED manufacturers data) and luminaire power of +/- 5%.

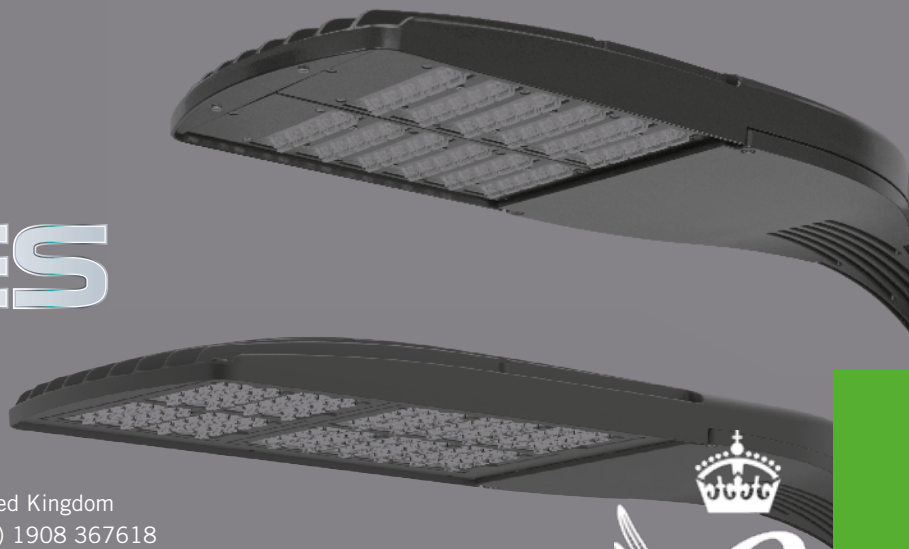


# J-SERIES

## Parking Garage

Holophane Europe Limited  
Bond Avenue, Bletchley, Milton Keynes MK1 1JG United Kingdom  
Telephone: +44 (0) 1908 649292 UK Fax: +44 (0) 1908 367618  
International Fax: +44 (0) 1908 363789  
E-mail: [info@holophane.co.uk](mailto:info@holophane.co.uk)

[www.holophane.co.uk](http://www.holophane.co.uk)



THE QUEEN'S AWARDS  
FOR ENTERPRISE:  
INNOVATION  
2017

