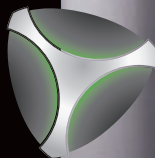




DENVER™  
elite system  
bollard

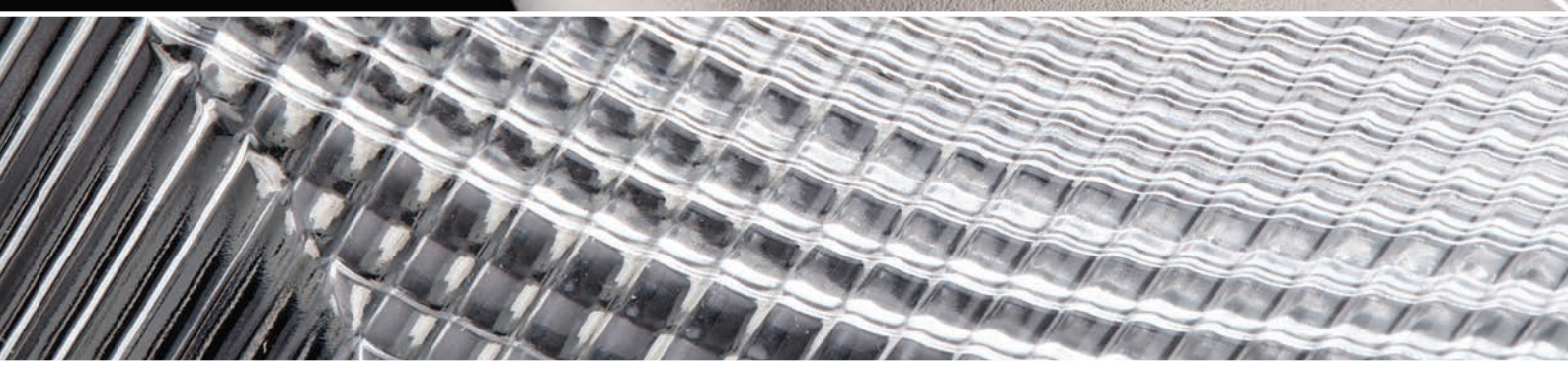
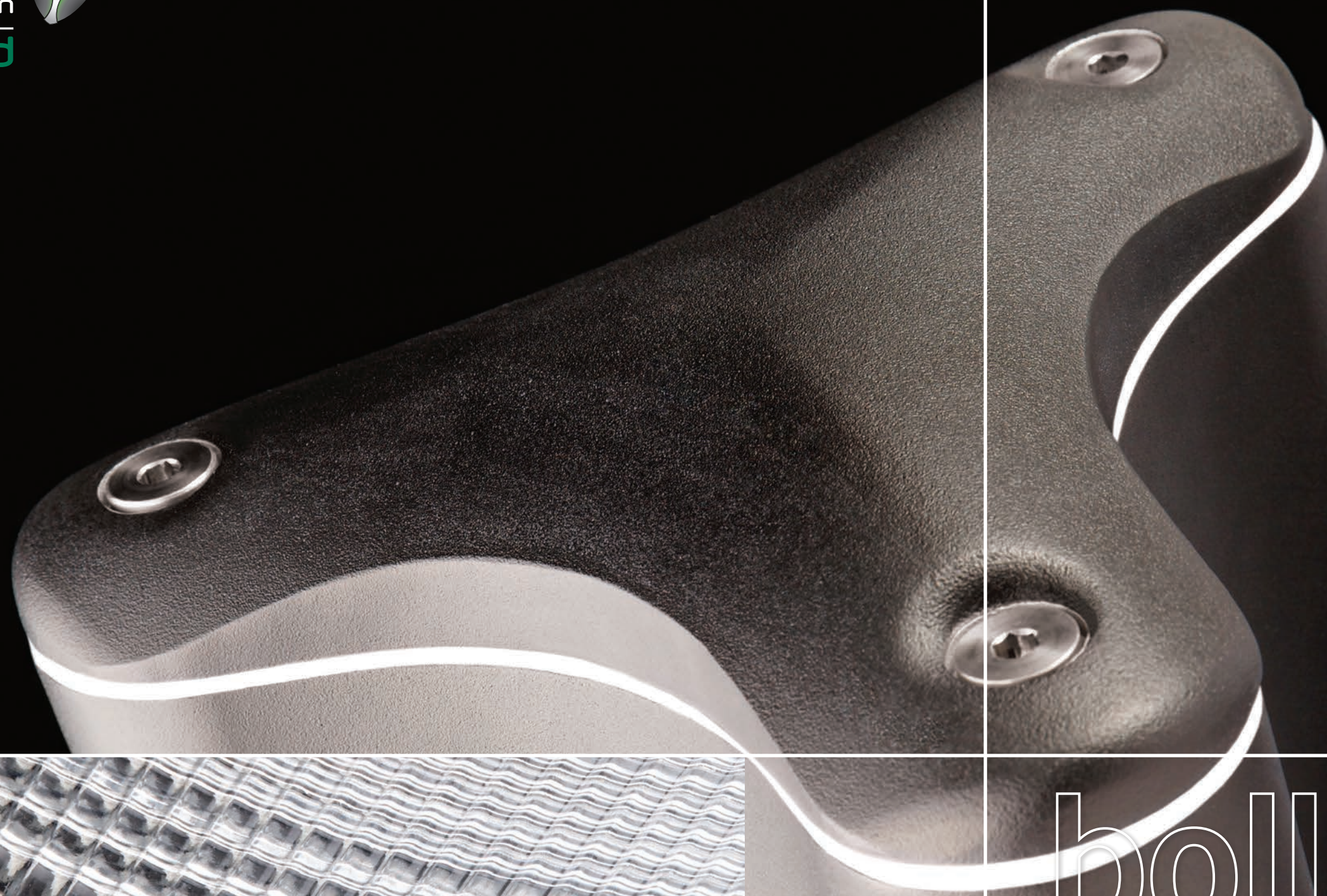


denver™ elite bollard

Patent Pending  
REGISTERED EUROPEAN DESIGN

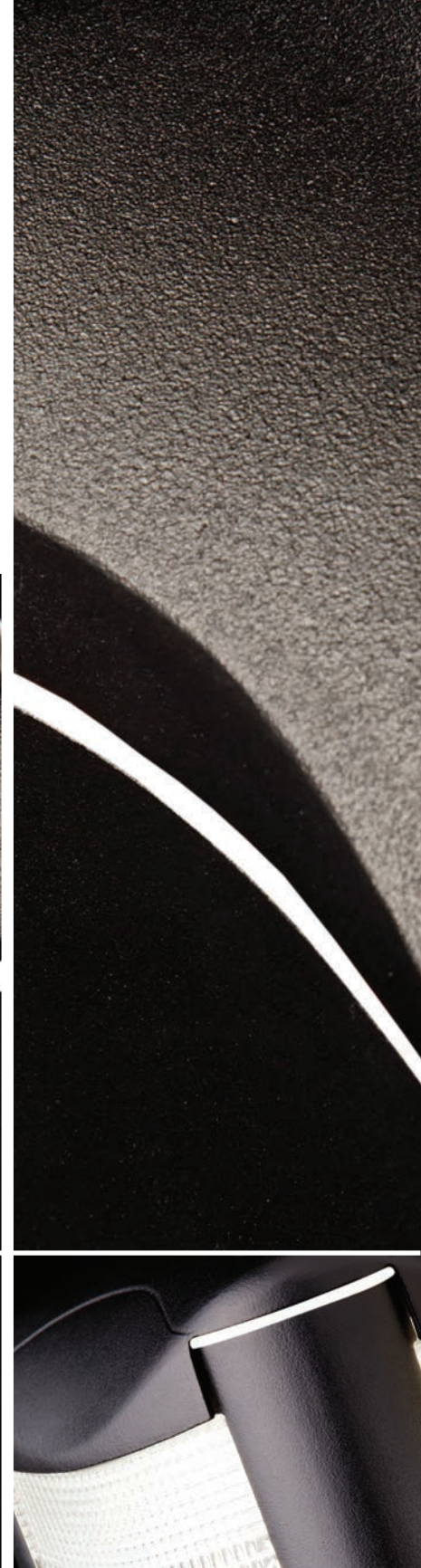






bollard  
denver™ elite





REGISTERED EUROPEAN DESIGN



Patent Pending

The **Denver™ Elite bollard** combines a palette of design variables, which include aesthetic appeal, quality, durability and performance.

The Denver™ Elite bollard is a modern aesthetic design that incorporate LED technology. Despite its stylised design the prismatic optical performance of the bollard is still industry leading offering a choice of distributions. The trilobe design profile with patent pending decorative light line membrane is a progression of everything we've learnt from our existing bollard whilst taking new technologies and environmental issues into consideration.



The product has been designed to incorporate a heat barrier that enables a 'cool to touch' feature and ensures that the product adheres to BS ENISO 13732-1. The membrane is mounted within the cap itself ensuring that it meets the 'cool to touch' standard at all times. In addition the barrier allows us to create a unique 'light line'. Giving you a safe and stylised product in one.





specification

The luminaire shall consist of an extruded aluminium body, housing integral control gear for LED technology. The optical arrangement shall consist of a prismatic lens or prismatic lens with louvre. The top tri-lobe gasket enabling the bollard to achieve EN60598-1 (patent pending) is secured between the top cap and body via three stainless steel nuts. Root mounted option available. The luminaire complies to EN60598 with a range of options and accessories.

lamp types

1,000 or 2,000 lumen package LED

TM66 CEAM-Make rating

Preliminary Rating: 2.2 (Definite/substantial progress to circularity)

approvals

- > BS EN60598-1

> BS EN55015

> BS EN61000-3-2

> BS EN61000-3-3
- > BS ENISO13732

> BS EN62031

> BS EN62384

> BS EN62560

ip rating

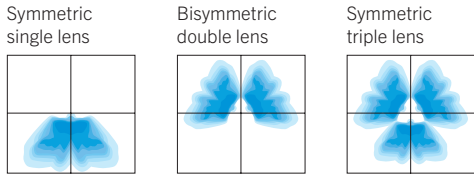
IP659



weight & thermal data (1m / 0.75m version)

Lamp Type	Weight (kg)	Min. Operating Temperature (°C)	Max. Ambient Temperature (°C)	Temp of Top(°C)
.L014	10.5 / 9	TBC	TBC / TBC	TBC / TBC
.L024	10.5 / 9	TBC	TBC / TBC	TBC / TBC

light distribution



features and benefits

- Contemporary styling

  - > Unique ‘registered’ tri-lobe design giving an aesthetic appeal that complements today’s modern architecture
- High Quality Construction

  - > Durable and robust design via three securing rods and nuts
  - > Fully weather sealed
- Single, Double or Triple lens

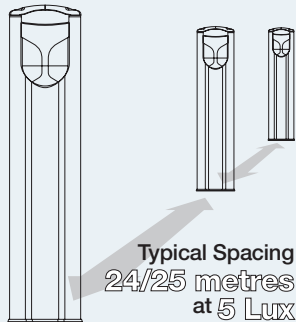
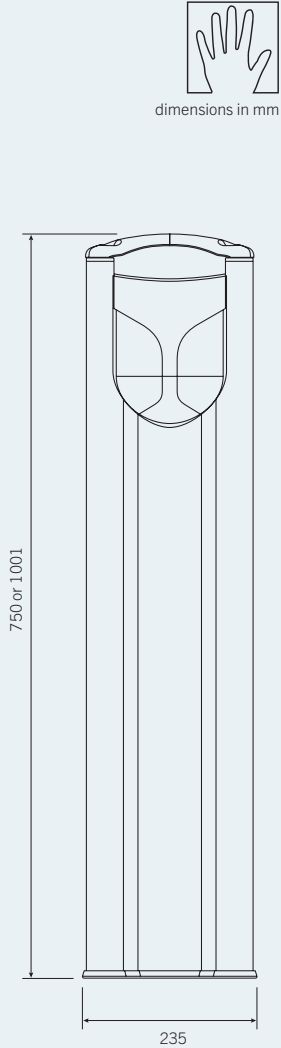
  - > Unique lens layout that is suitable for a wide range of applications
- Louvre with Prismatic Lens

  - > Gives the bollard additional uplight cut-off. A first in any bollard
- Decorative ‘Patent Pending’ Light Line

  - > Gives the product a unique style
  - > Cool to touch. Product complies to BS ENISO 13732-1
- Available in 2 heights


  - > Flexibility
  - > Different visual effects
- Vandal resistant

  - > Robust styling and build process.
  - > Patented tri-lobe design enables stability



ordering details

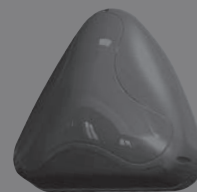
To find out more  
please visit  
[www.holophane.co.uk](http://www.holophane.co.uk)

Code											
DEB	Denver™ Elite Bollard										
	<b>Code</b>	<b>Lamp Type</b> (required)									
	.L014	LED light engine producing c.1,000 lm with a nominal 4000K									
	.L024	LED light engine producing c.2,000 lm with a nominal 4000K									
	<b>Code</b>	<b>Distribution</b>									
	.PAY	Asymmetrical Distribution									
	<b>Code</b>	<b>Optical Enclosure</b>									
	.SU	Single Sided Asymmetric Distribution									
	.DO	Double Sided Bisymmetric Distribution									
	.TR	Triple Sided Symmetric Distribution									
	<b>Code</b>	<b>Head / Height</b>									
	.H75	750mm High									
	.H100	1000mm High									
	<b>Code</b>	<b>Colour</b> (required)									
	.C1	Smooth White (RAL 9016)									
	.C4	Smooth Graphite (RAL 7011)									
	.C6	Smooth Grey (RAL 7035)									
	.C7	Textured Black (RAL 9005)									
.C9	Metallic Silver (RAL 9006)										
.RAL****	RAL Colour (customer choice)										
<b>Code</b>	<b>Paint Finish</b>										
.C	Enhanced Paint Finish										
<b>Code</b>	<b>Cut Outs</b>										
.MCB	Mini circuit breaker										
<b>Code</b>	<b>Auxiliary Circuits</b>										
.TW	Through Wiring option										
<b>Code</b>	<b>Emergency</b>										
.ME1	3hr maintained emergency IP65										
<b>Code</b>	<b>Screws</b>										
.V1	Vandal-resistant screws										
Example	DEB	.26PL4	.LYA	.DO	.H75	.C9	.C	.MCB	.TW	.ME1	.V1

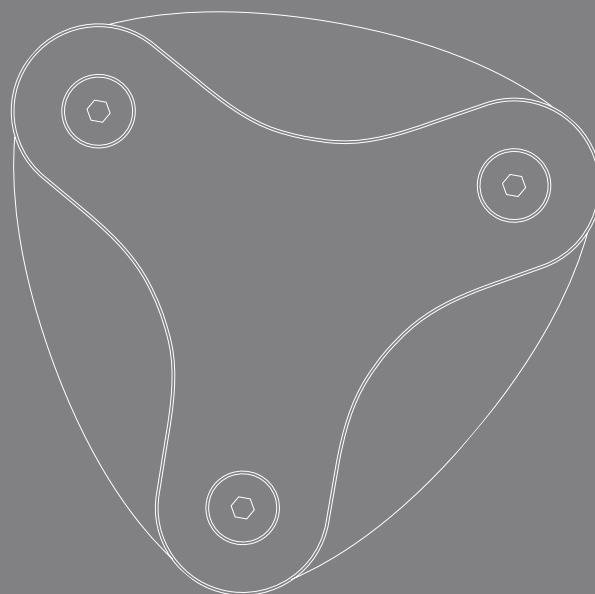
Lumen data is considered to be representative of the configuration shown, and may vary, with a tolerance on flux of +/- 7% (typical of LED manufacturers data) and luminaire power of +/- 5%.

luminaire accessories

Code	
DBL.FT	Set of 3 Bolts M10 x 100mm for Flange Base Fixing
DEB.ROOT	Root Mounting Spike to fit Flange Base Denver™ Elite Bollard
DBL.VK	Vandal key for Denver™ Elite Bollard



denver™ elite range



DENVER™  
elite system  
bollard



Holophane Europe Limited  
Bond Avenue, Bletchley, Milton Keynes MK1 1JG United Kingdom  
Telephone: +44 (0)1908 649292 E-mail: [info@holophane.co.uk](mailto:info@holophane.co.uk)  
[www.holophane.co.uk](http://www.holophane.co.uk)

AcuityBrands.

